

# Windham High School: 2017 NH YRBS Preliminary Report

---

## Physical Inactivity and Unhealthy Dietary Behaviors: Time Trends, By Sex, and By Grade

Windham High School is in the Greater Derry Public Health Region and is served by the Bridges crisis center.

## PRELIMINARY RESULTS (v1.2)

This report contains preliminary results for 2017. All 2017 results are subject to change when the CDC returns the final dataset to the State, expected in early 2018. Please use caution when referring to and using these preliminary data until the final data set is received from the CDC. This report contains results for all questions asked on any YRBS survey since 2007. Note, access to regional level results were first made available in 2015 and are not available prior to that year.

## State and Regional Estimates

State and Regional estimates are calculated from a random sample developed using scientific survey methods. These methods ensure the respondents are representative of students in the region in the State. These estimates account for student, classroom, school, and regional factors. The random sample is not designed to provide school level estimates.

## School Level Estimates

The 2017 survey response rate at Windham High School was 87% where 786 of 901 students took the survey. **School level estimates are unweighted and based on a convenience sample of students in attendance, and not opting out of participation in the YRBS, on a given date and time during the school year.** However, because participation was relatively high the school estimates may still be representative of the entire school population. Results could be less representative if specific classrooms or classroom types were not included in the survey. We have attempted to estimate how many students in the school actually fall within each risk category. We did this by scaling up the students responding in the survey using school enrollment data.

Estimates number and percentage were suppressed (\*) if the underlying sample size was <60 respondents and/or cell sizes are between 1 and 5.

## Help and assistance

### Questions on this report (NH YRBS Community level preliminary report)

Health Statistics and Data Management

Division of Public Health Services - State of NH

NH.YouthRiskBehaviorSurvey@dhhs.nh.gov; (603) 271-4988;

### Additional technical assistance for YRBS related information

NH Center for Excellence

nhcenterforexcellence@jsi.com; (603) 573-3300

<http://nhcenterforexcellence.org/center-services/request-ta/>

## Change Log

**v1.2:** Indicators revised to display by CDC question direction as greater risk; and, revised methodology to more accurately display number of students projected based on school enrollment data.

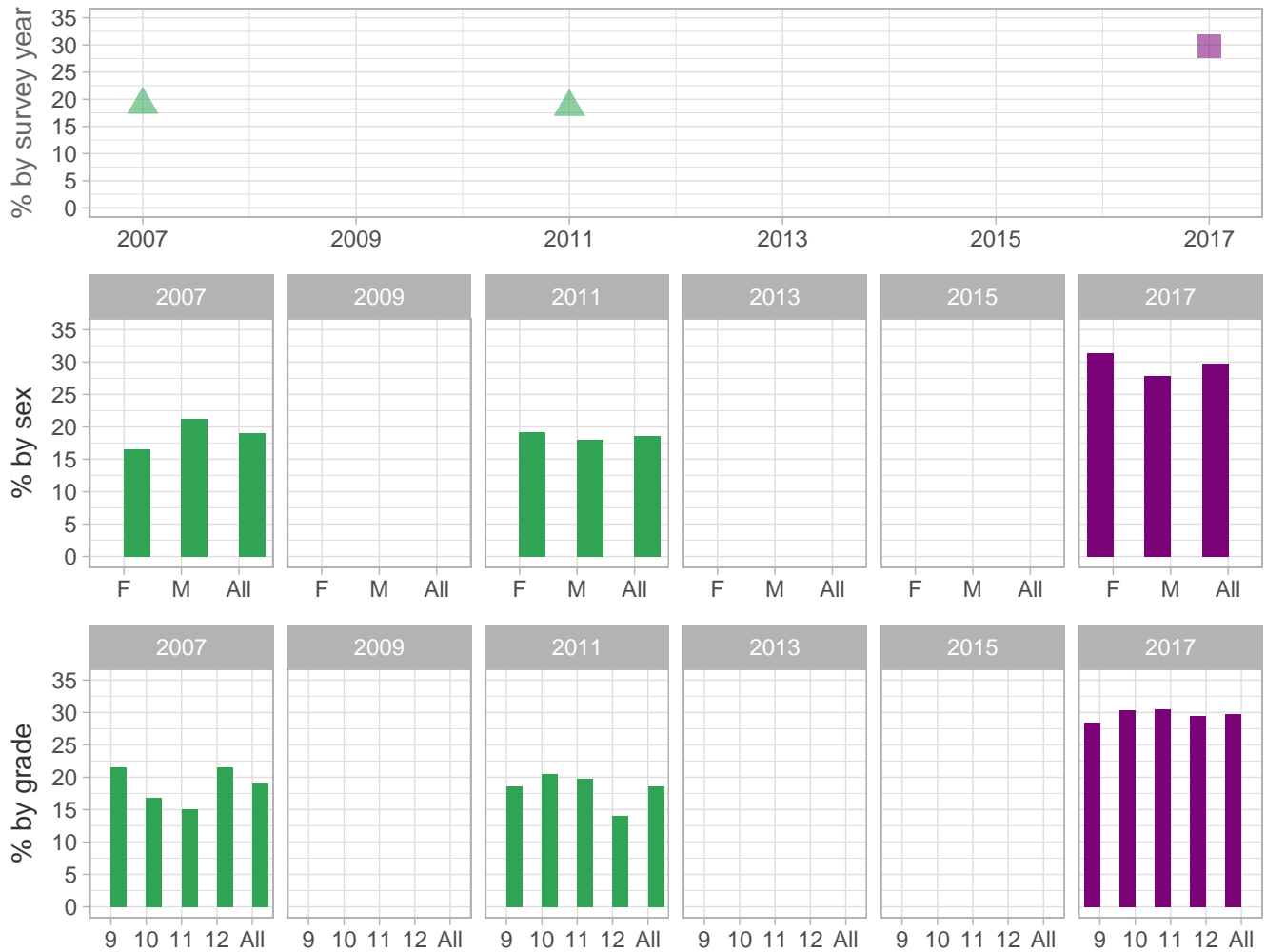
**v1.1:** School estimates corrected to include CDC sample - report sent 8/31-9/1

**v1.0:** Initial report sent 8/29

 School  Region  NH

## Physical Inactivity and Unhealthy Dietary Behaviors

Percent of students who did not drink 100% fruit juices during the 7 days



School-level by Sex and Grade

		2009(pct)	2011(pct)	2013(pct)	2015(pct)	2017(pct)	2017(n)
By sex	F	-	*	-	-	31.4	135
	M	-	*	-	-	27.8	129
By grade	9th	-	*	-	-	28.5	76
	10th	-	*	-	-	30.4	68
	11th	-	-	-	-	30.5	67
	12th	-	-	-	-	29.5	57
All	All	-	*	-	-	29.7	268

How the question was actually asked: During the past 7 days, how many times did you drink 100% fruit juices such as orange juice, apple juice, or grape juice? (Do not count punch, Kool-Aid, sports drinks, or other fruit-flavored drinks.); a: I did not drink 100% fruit juice during the past 7 days ; b: 1 to 3 times during the past 7 days ; c: 4 to 6 times during the past 7 days ; d: 1 time per day ; e: 2 times per day ; f: 3 times per day ; g: 4 or more times per day;

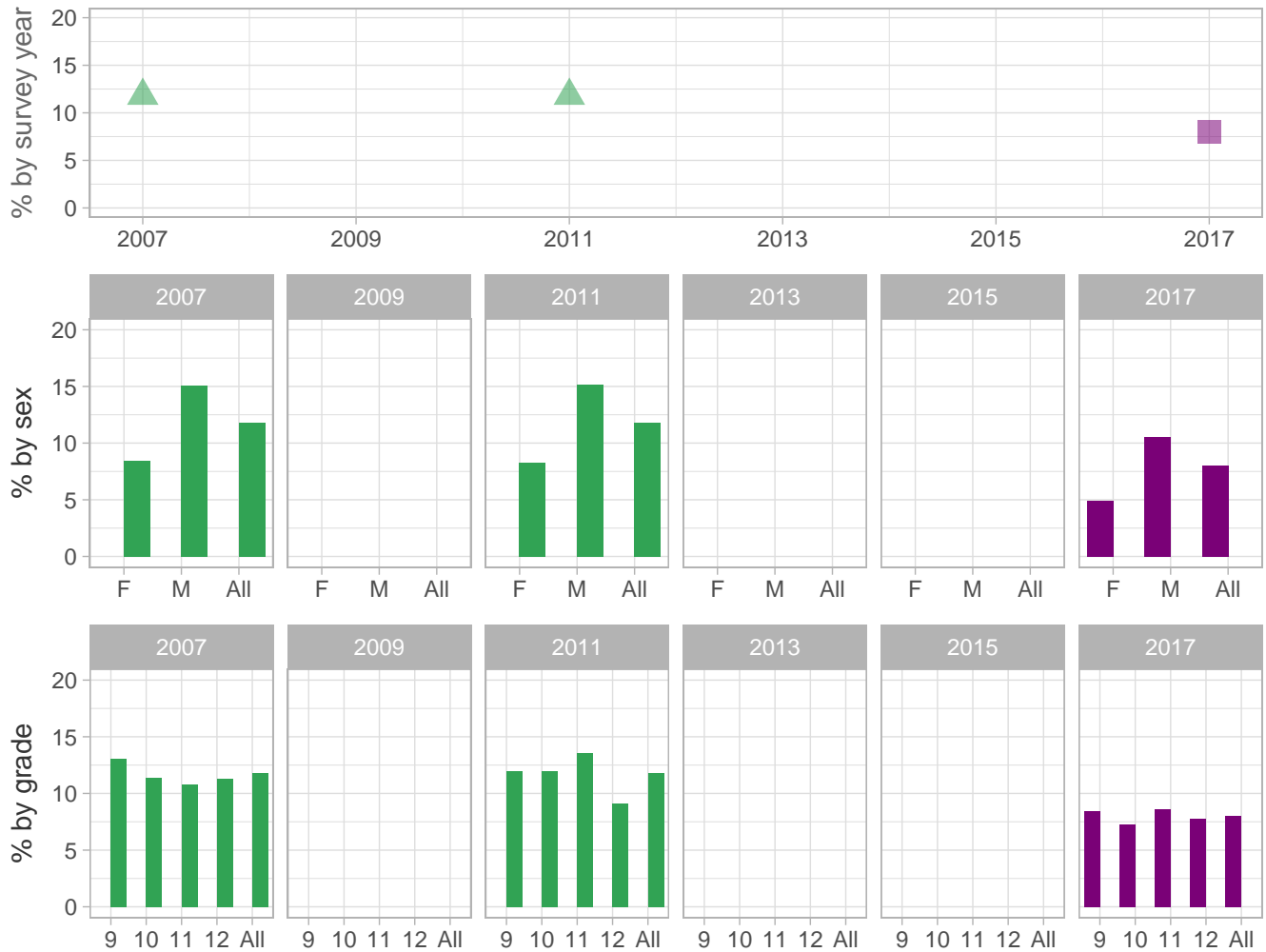
Percent (pct): numerator: a; denominator: abcdefg; qid: 189; 2007q59; 2009q999; 2011q63; 2013q999; 2015q999; 2017q63; Number (n): Estimated number of students projected based on school enrollment data.

-: Data not available; \*: Suppressed due to small cell sizes.

 School
  Region
  NH

## Physical Inactivity and Unhealthy Dietary Behaviors

Percent of students who did not eat fruit during the 7 days



School-level by Sex and Grade

		2009(pct)	2011(pct)	2013(pct)	2015(pct)	2017(pct)	2017(n)
<b>By sex</b>	F	-	*	-	-	4.9	21
	M	-	*	-	-	10.5	49
<b>By grade</b>	9th	-	*	-	-	8.4	23
	10th	-	*	-	-	7.3	17
	11th	-	-	-	-	8.6	19
	12th	-	-	-	-	7.8	16
	All	-	*	-	-	8.0	72

How the question was actually asked: During the past 7 days, how many times did you eat fruit? (Do not count fruit juice.);  
 a: I did not eat fruit during the past 7 days ; b: 1 to 3 times during the past 7 days ; c: 4 to 6 times during the past 7 days ;  
 d: 1 time per day ; e: 2 times per day ; f: 3 times per day ; g: 4 or more times per day;

Percent (pct): numerator: a; denominator: abcdefg; qid: 190; 2007q60; 2009q999; 2011q64; 2013q999; 2015q999; 2017q64;  
 Number (n): Estimated number of students projected based on school enrollment data.

-: Data not available; \*: Suppressed due to small cell sizes.

 School
  Region
  NH

## Physical Inactivity and Unhealthy Dietary Behaviors

Percent of students who did not eat green salad during the 7 days



School-level by Sex and Grade

		2009(pct)	2011(pct)	2013(pct)	2015(pct)	2017(pct)	2017(n)
<b>By sex</b>	F	-	*	-	-	21.7	93
	M	-	*	-	-	35.8	166
<b>By grade</b>	9th	-	*	-	-	29.4	78
	10th	-	*	-	-	24.6	55
	11th	-	-	-	-	31.6	69
	12th	-	-	-	-	31.3	61
	All	-	*	-	-	29.2	263

How the question was actually asked: During the past 7 days, how many times did you eat green salad?; a: I did not eat green salad during the past 7 days ; b: 1 to 3 times during the past 7 days ; c: 4 to 6 times during the past 7 days ; d: 1 time per day ; e: 2 times per day ; f: 3 times per day ; g: 4 or more times per day;

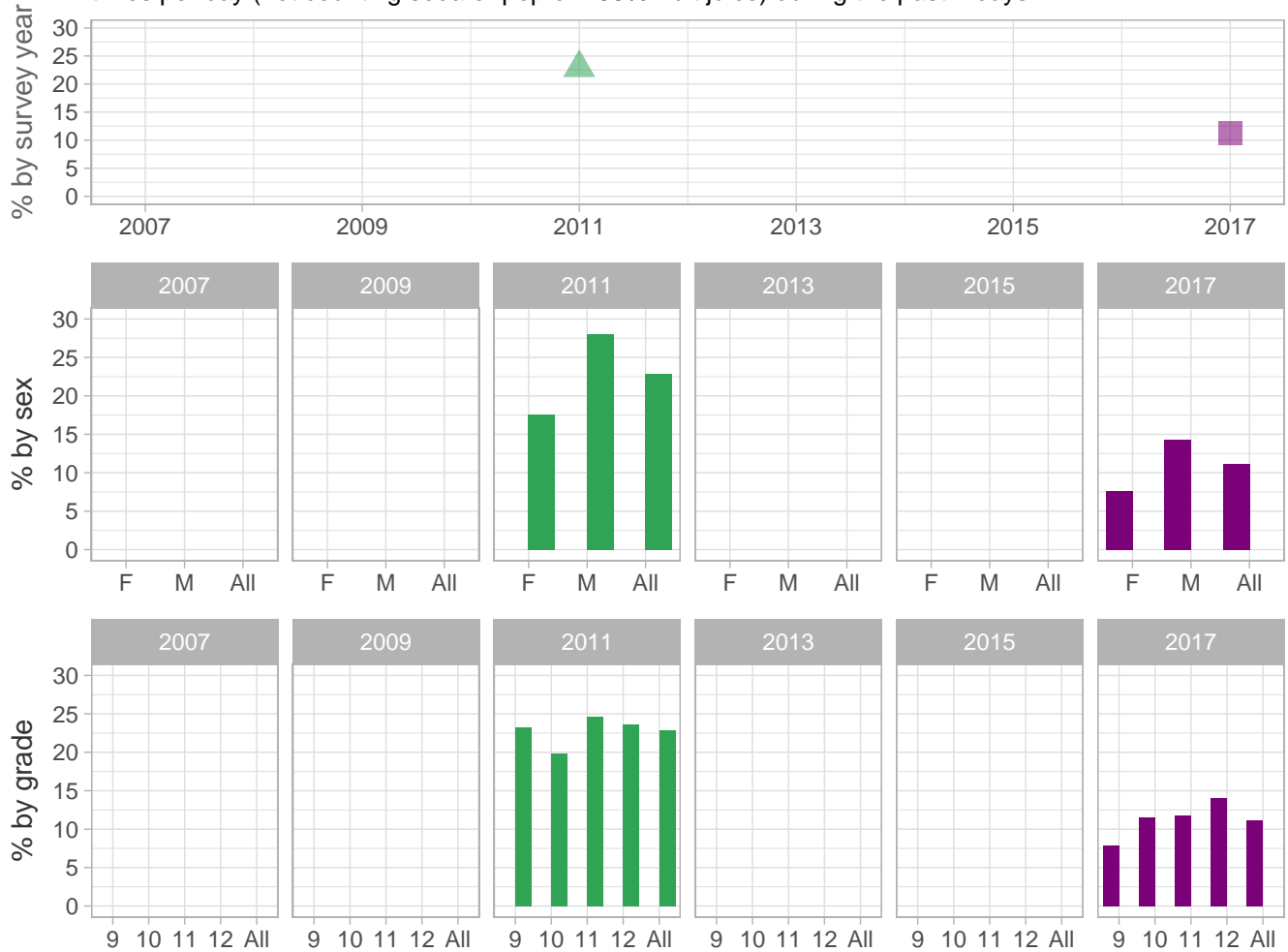
Percent (pct): numerator: a; denominator: abcdefg; qid: 61; 2007q61; 2009q999; 2011q65; 2013q999; 2015q999; 2017q65; Number (n): Estimated number of students projected based on school enrollment data.

-: Data not available; \*: Suppressed due to small cell sizes.

 School 
  Region 
  NH

## Physical Inactivity and Unhealthy Dietary Behaviors

Percent of students who drank a can, bottle, or glass of a sugar-sweetened beverage one or more times per day (not counting soda or pop or 100% fruit juice) during the past 7 days



School-level by Sex and Grade

		2009(pct)	2011(pct)	2013(pct)	2015(pct)	2017(pct)	2017(n)
<b>By sex</b>	F	-	*	-	-	7.6	33
	M	-	*	-	-	14.3	67
<b>By grade</b>	9th	-	*	-	-	7.9	21
	10th	-	*	-	-	11.5	26
	11th	-	-	-	-	11.8	26
	12th	-	-	-	-	14.0	27
	All	-	*	-	-	11.2	102

How the question was actually asked: During the past 7 days, how many times did you drink a can, bottle, or glass of a sugar-sweetened beverage such as lemonade, sweetened tea or coffee drinks, flavored milk, Snapple, or Sunny Delight? (Do not include soda or pop, sports drinks, energy drinks, or 100% fruit juice.); a: I did not drink sugar-sweetened beverages during the past 7 days; b: 1 to 3 times during the past 7 days; c: 4 to 6 times during the past 7 days; d: 1 time per day; e: 2 times per day; f: 3 times per day; g: 4 or more times per day;

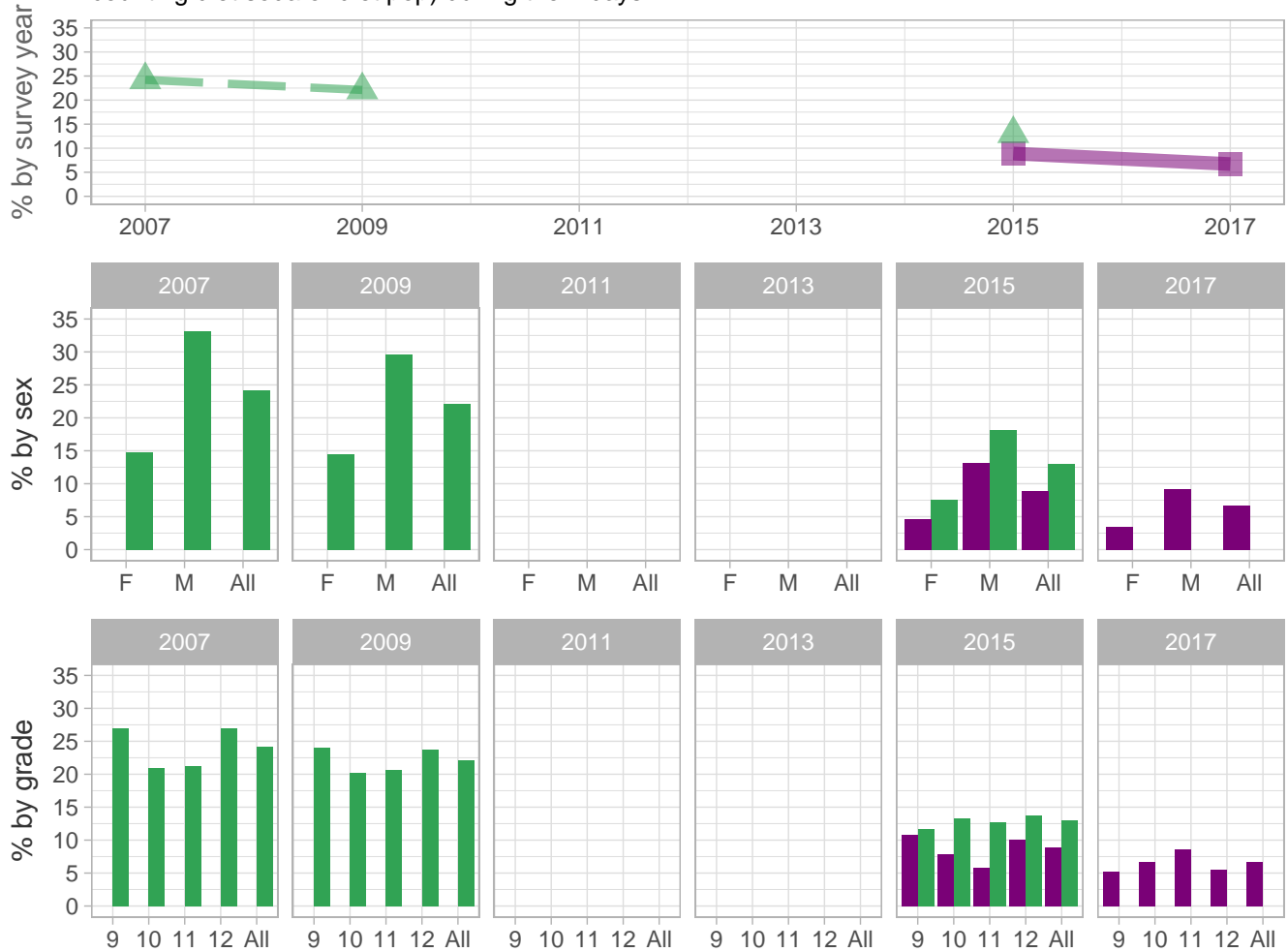
Percent (pct): numerator: defg; denominator: abcdefg; qid: 128; 2007q999; 2009q999; 2011q69; 2013q999; 2015q999; 2017q66; Number (n): Estimated number of students projected based on school enrollment data.

-: Data not available; \*: Suppressed due to small cell sizes.

 School
  Region
  NH

## Physical Inactivity and Unhealthy Dietary Behaviors

Percent of students who drank a can, bottle, or glass of soda or pop one or more times per day (not counting diet soda or diet pop) during the 7 days



School-level by Sex and Grade

		2009(pct)	2011(pct)	2013(pct)	2015(pct)	2017(pct)	2017(n)
<b>By sex</b>	F	-	-	-	4.6	3.5	16
	M	-	-	-	13.1	9.2	43
<b>By grade</b>	9th	-	-	-	10.8	5.2	14
	10th	-	-	-	7.8	6.7	16
	11th	-	-	-	5.8	8.6	19
	12th	-	-	-	10.1	5.5	11
<b>All</b>	All	-	-	-	8.9	6.7	61

How the question was actually asked: During the past 7 days, how many times did you drink a can, bottle, or glass of soda or pop, such as Coke, Pepsi, or Sprite? (Do not count diet soda or diet pop.); a: I did not drink soda or pop during the past 7 days ; b: 1 to 3 times during the past 7 days ; c: 4 to 6 times during the past 7 days ; d: 1 time per day ; e: 2 times per day ; f: 3 times per day ; g: 4 or more times per day;

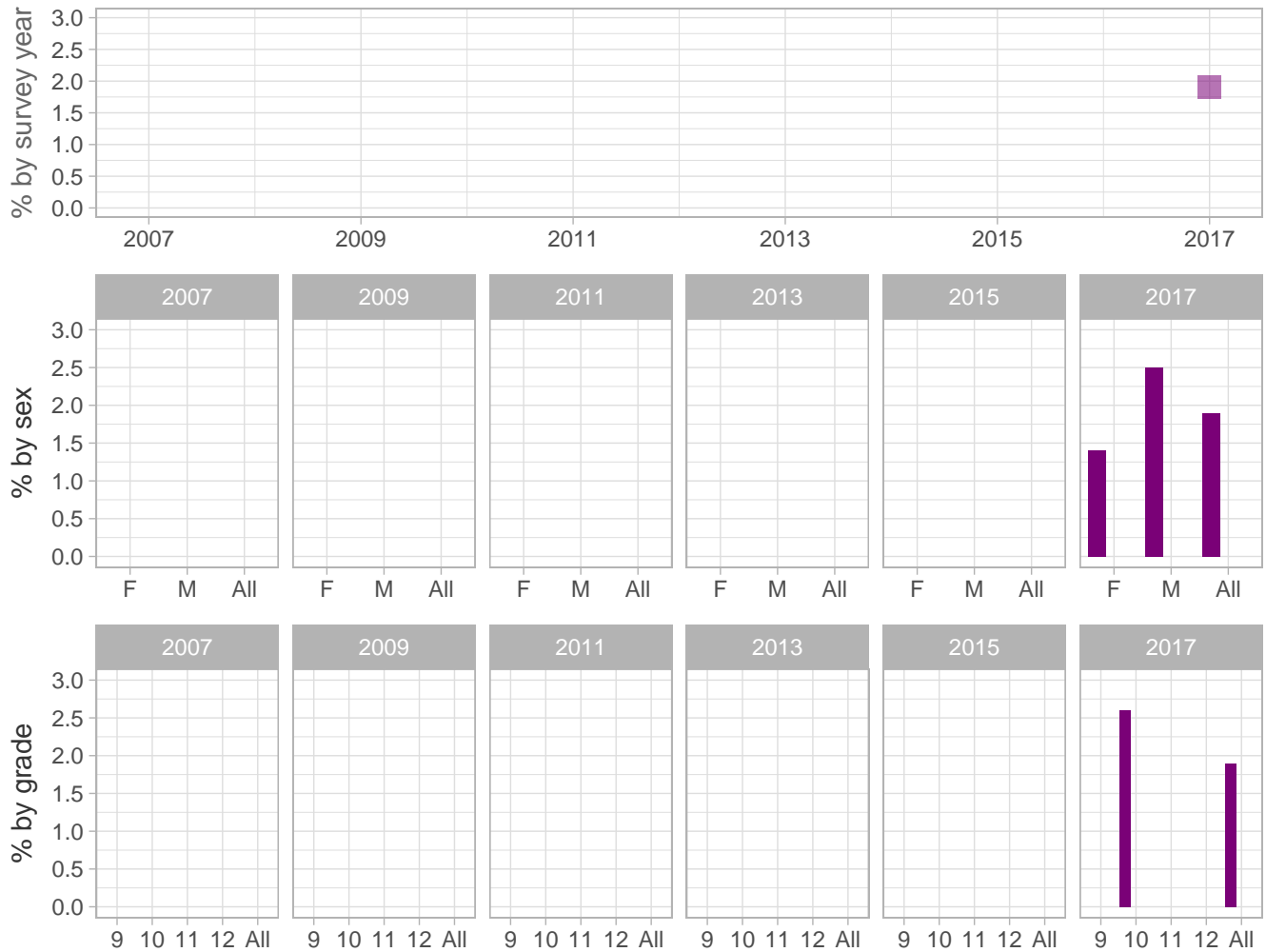
Percent (pct): numerator: defg; denominator: abcdefg; qid: 65; 2007q65; 2009q69; 2011q999; 2013q999; 2015q62; 2017q67; Number (n): Estimated number of students projected based on school enrollment data.

-: Data not available; \*: Suppressed due to small cell sizes.

 School  Region  NH

## Physical Inactivity and Unhealthy Dietary Behaviors

Percent of students who did not drink at least one glass of plain water during the 7 days



School-level by Sex and Grade

		2009(pct)	2011(pct)	2013(pct)	2015(pct)	2017(pct)	2017(n)
<b>By sex</b>	F	-	-	-	-	1.4	6
	M	-	-	-	-	2.5	12
<b>By grade</b>	9th	-	-	-	-	*	*
	10th	-	-	-	-	2.6	6
	11th	-	-	-	-	*	*
	12th	-	-	-	-	*	*
<b>All</b>	<b>All</b>	-	-	-	-	1.9	18

How the question was actually asked: During the past 7 days, how many times did you drink a bottle or glass of plain water? (Count tap, bottled, and unflavored sparkling water.); a: I did not drink water during the past 7 days ; b: 1 to 3 times during the past 7 days ; c: 4 to 6 times during the past 7 days ; d: 1 time per day ; e: 2 times per day ; f: 3 times per day ; g: 4 or more times per day;

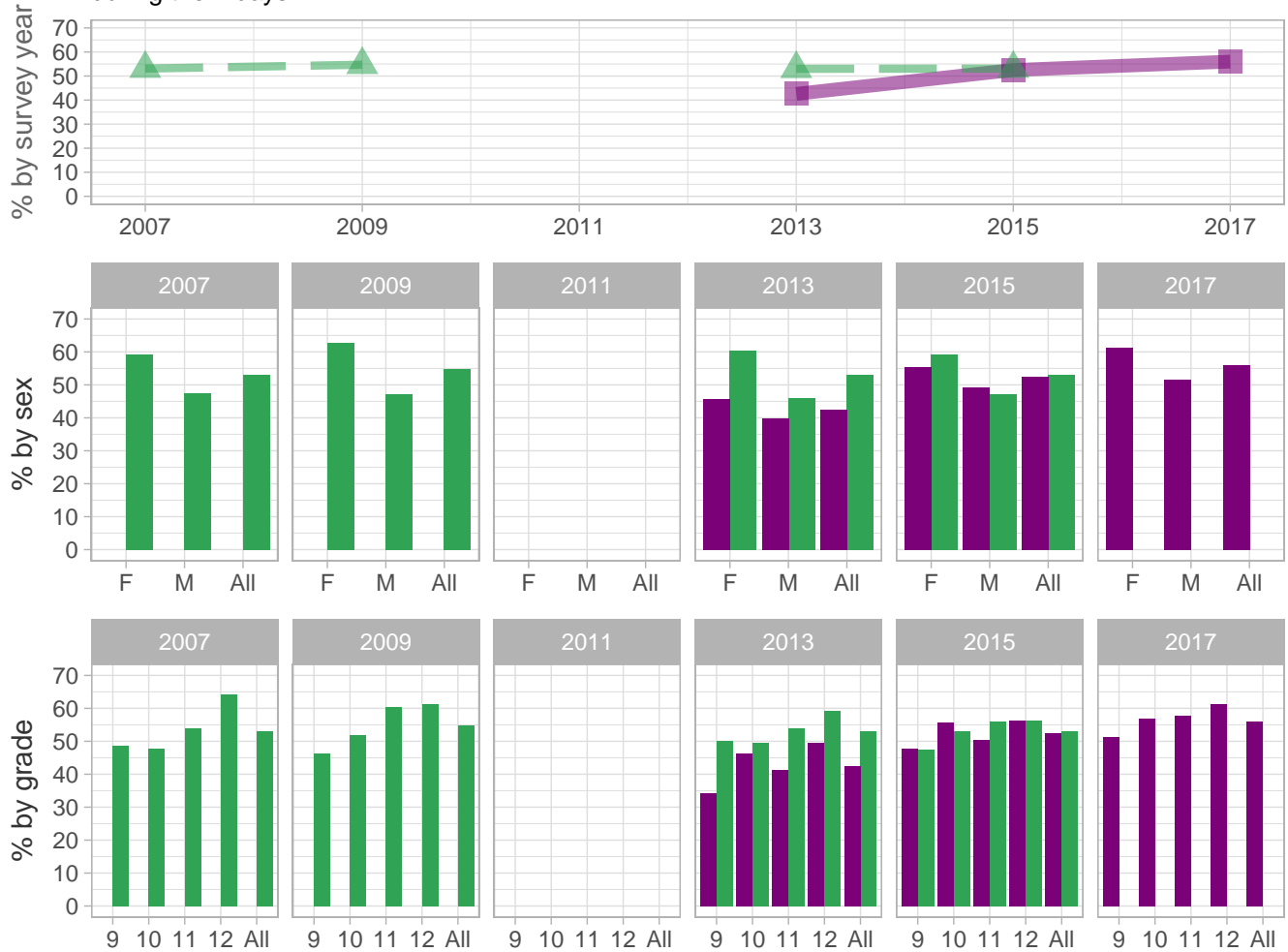
Percent (pct): numerator: a; denominator: abcdefg; qid: 192; 2007q999; 2009q999; 2011q999; 2013q999; 2015q999; 2017q68; Number (n): Estimated number of students projected based on school enrollment data.

-: Data not available; \*: Suppressed due to small cell sizes.

 School
  Region
  NH

## Physical Inactivity and Unhealthy Dietary Behaviors

Percent of students who were not physically active at least 60 minutes per day on 5 or more days during the 7 days



School-level by Sex and Grade

		2009(pct)	2011(pct)	2013(pct)	2015(pct)	2017(pct)	2017(n)
<b>By sex</b>	F	-	-	45.7	55.5	61.2	262
	M	-	-	39.7	49.1	51.7	240
<b>By grade</b>	9th	-	-	34.3	47.9	51.3	136
	10th	-	-	46.3	55.6	57.0	128
	11th	-	-	41.2	50.3	57.8	124
	12th	-	-	49.6	56.3	61.4	119
<b>All</b>	All	-	-	42.6	52.5	56.0	505

How the question was actually asked: During the past 7 days, on how many days were you physically active for a total of at least 60 minutes per day? (Add up all the time you spent in any kind of physical activity that increased your heart rate and made you breathe hard some of the time.); a: 0 days ; b: 1 day ; c: 2 days ; d: 3 days ; e: 4 days ; f: 5 days ; g: 6 days ; h: 7 days;

Percent (pct): numerator: abcde; denominator: abcdefgh; qid: 67; 2007q67; 2009q70; 2011q999; 2013q69; 2015q63; 2017q69; Number (n): Estimated number of students projected based on school enrollment data.

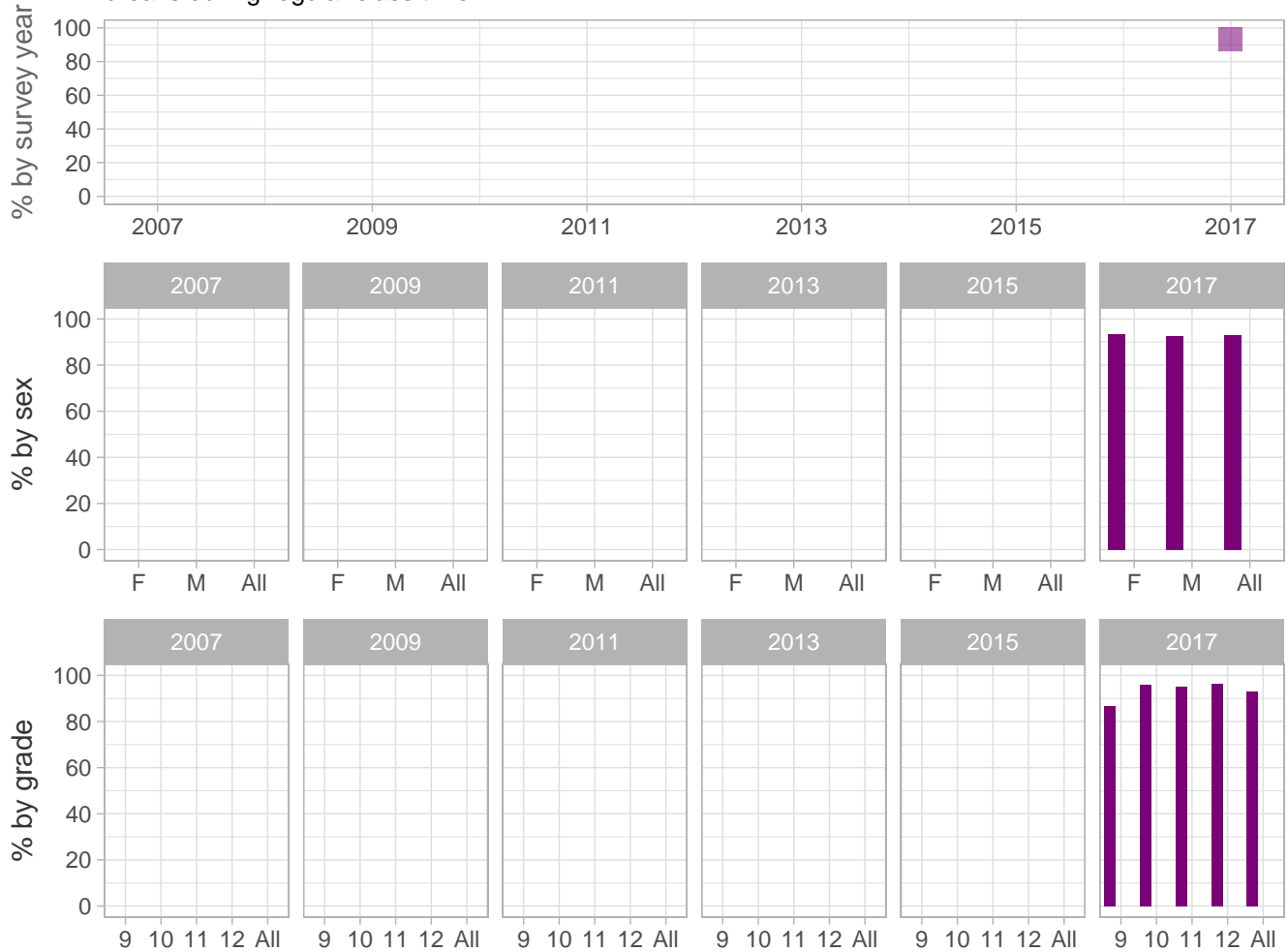
-: Data not available; \*: Suppressed due to small cell sizes.



 School
  Region
  NH

## Physical Inactivity and Unhealthy Dietary Behaviors

Percent of students who did not have their classroom teachers provide short physical activity breaks during regular class time



School-level by Sex and Grade

		2009(pct)	2011(pct)	2013(pct)	2015(pct)	2017(pct)	2017(n)
<b>By sex</b>	F	-	-	-	-	93.5	400
	M	-	-	-	-	92.8	431
<b>By grade</b>	9th	-	-	-	-	86.8	229
	10th	-	-	-	-	95.9	215
	11th	-	-	-	-	95.1	205
	12th	-	-	-	-	96.4	186
<b>All</b>	<b>All</b>	-	-	-	-	93.2	840

How the question was actually asked: Do any of your classroom teachers provide short physical activity breaks during regular class time? (Do not count your physical education teacher.); a: Yes ; b: No;

Percent (pct): numerator: b; denominator: ab; qid: 193; 2007q999; 2009q999; 2011q999; 2013q999; 2015q999; 2017q70;

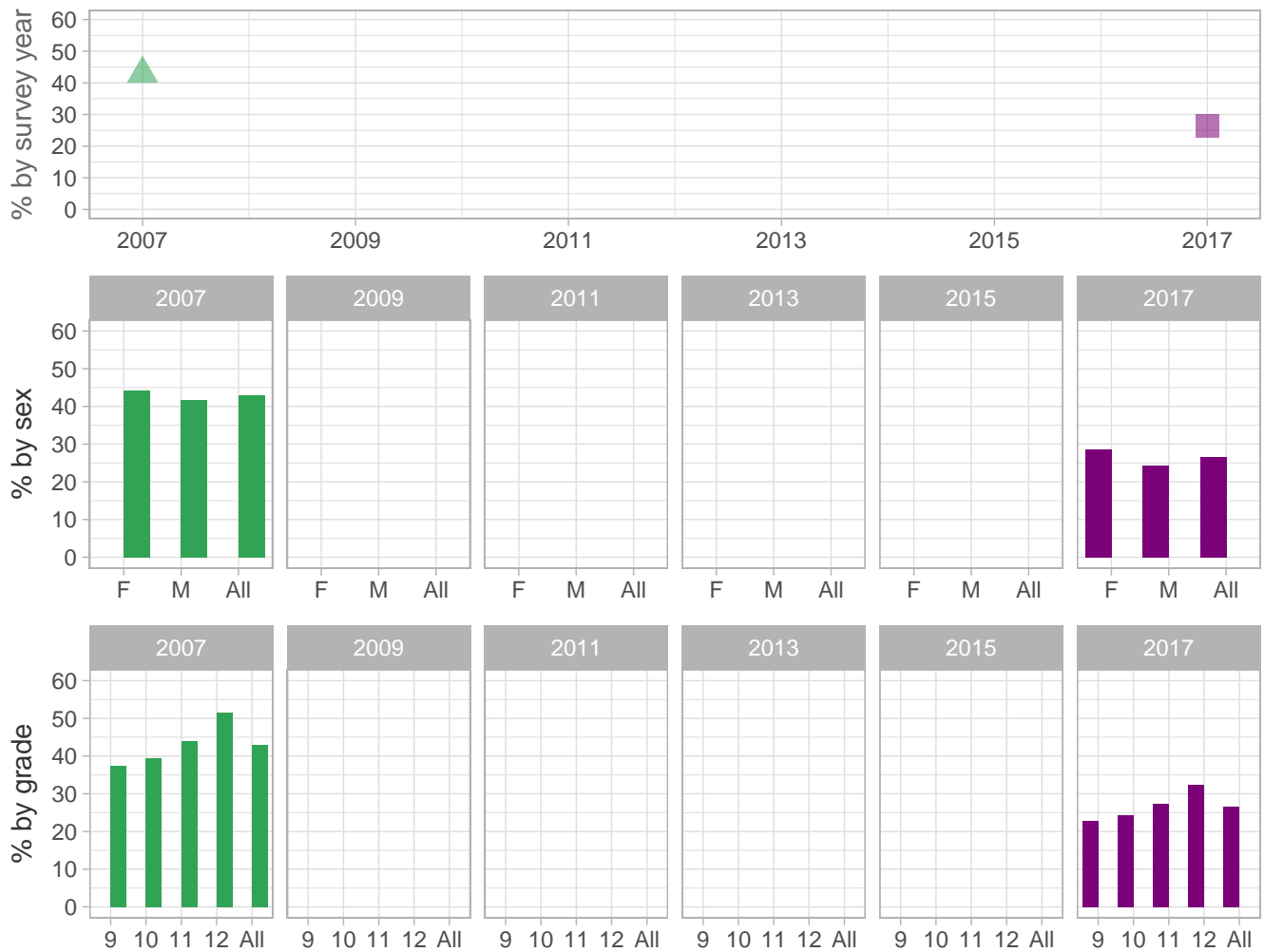
Number (n): Estimated number of students projected based on school enrollment data.

-: Data not available; \*: Suppressed due to small cell sizes.

 School  Region  NH

## Physical Inactivity and Unhealthy Dietary Behaviors

Percent of students who did not play on at least one sports team during the past 12 months



School-level by Sex and Grade

		2009(pct)	2011(pct)	2013(pct)	2015(pct)	2017(pct)	2017(n)
By sex	F	-	-	-	-	28.7	123
	M	-	-	-	-	24.3	113
By grade	9th	-	-	-	-	22.7	60
	10th	-	-	-	-	24.4	55
	11th	-	-	-	-	27.3	59
	12th	-	-	-	-	32.5	63
All	All	-	-	-	-	26.5	239

How the question was actually asked: During the past 12 months, on how many sports teams did you play?; a: 0 teams; b: 1 team; c: 2 teams; d: 3 or more teams;

Percent (pct): numerator: a; denominator: abcd; qid: 71; 2007q71; 2009q999; 2011q999; 2013q999; 2015q999; 2017q71;

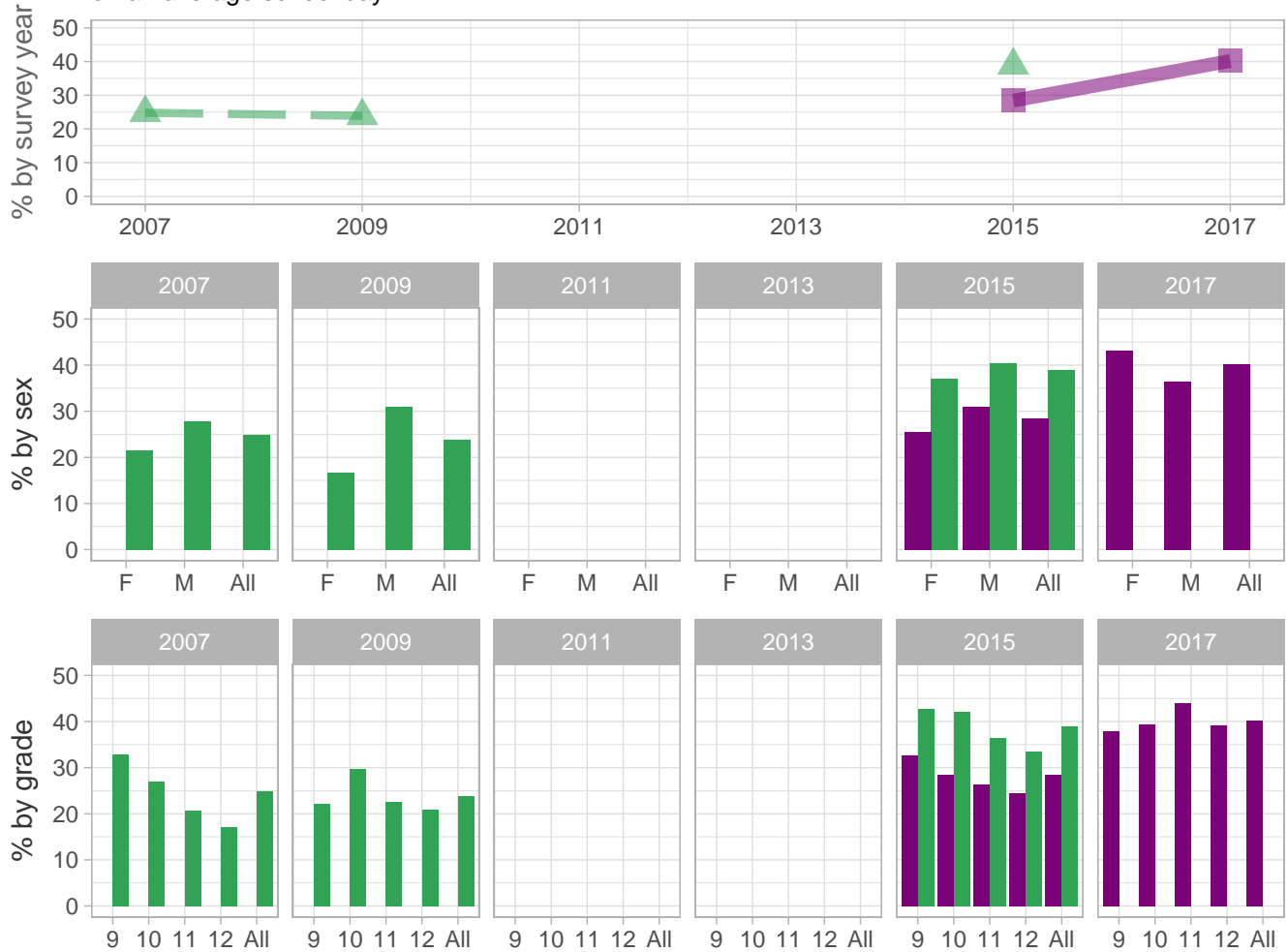
Number (n): Estimated number of students projected based on school enrollment data.

-: Data not available; \*: Suppressed due to small cell sizes.

 School
  Region
  NH

## Physical Inactivity and Unhealthy Dietary Behaviors

Percent of students who played video or computer games or used a computer 3 or more hours per day on an average school day



School-level by Sex and Grade

		2009(pct)	2011(pct)	2013(pct)	2015(pct)	2017(pct)	2017(n)
<b>By sex</b>	F	-	-	-	25.5	43.1	184
	M	-	-	-	31.0	36.5	170
<b>By grade</b>	9th	-	-	-	32.7	38.0	101
	10th	-	-	-	28.5	39.4	88
	11th	-	-	-	26.3	43.9	95
	12th	-	-	-	24.4	39.2	75
<b>All</b>	All	-	-	-	28.4	40.2	363

How the question was actually asked: On an average school day, how many hours do you play video or computer games or use a computer for something that is not school work? (Count time spent on things such as Xbox, PlayStation, an iPad or other tablet, a smartphone, texting, YouTube, Instagram, Facebook, or other social media.); a: I do not play video or computer games or use a computer for something that is not school work ; b: Less than 1 hour per day ; c: 1 hour per day ; d: 2 hours per day ; e: 3 hours per day ; f: 4 hours per day ; g: 5 or more hours per day;

Percent (pct): numerator: efg; denominator: abcdefg; qid: 69; 2007q69; 2009q72; 2011q999; 2013q999; 2015q65; 2017q72; Number (n): Estimated number of students projected based on school enrollment data.

-: Data not available; \*: Suppressed due to small cell sizes.

 School  Region  NH

## Physical Inactivity and Unhealthy Dietary Behaviors

Percent of students who were not trying to lose weight



School-level by Sex and Grade

		2009(pct)	2011(pct)	2013(pct)	2015(pct)	2017(pct)	2017(n)
By sex	F	-	-	41.0	39.0	-	-
	M	-	-	76.4	77.8	-	-
By grade	9th	-	-	55.5	62.6	-	-
	10th	-	-	55.6	63.1	-	-
	11th	-	-	66.7	57.0	-	-
	12th	-	-	61.7	50.6	-	-
All	All	-	-	59.5	58.8	-	-

How the question was actually asked: Which of the following are you trying to do about your weight?; a: Lose weight; b: Gain weight; c: Stay the same weight; d: I am not trying to do anything about my weight;

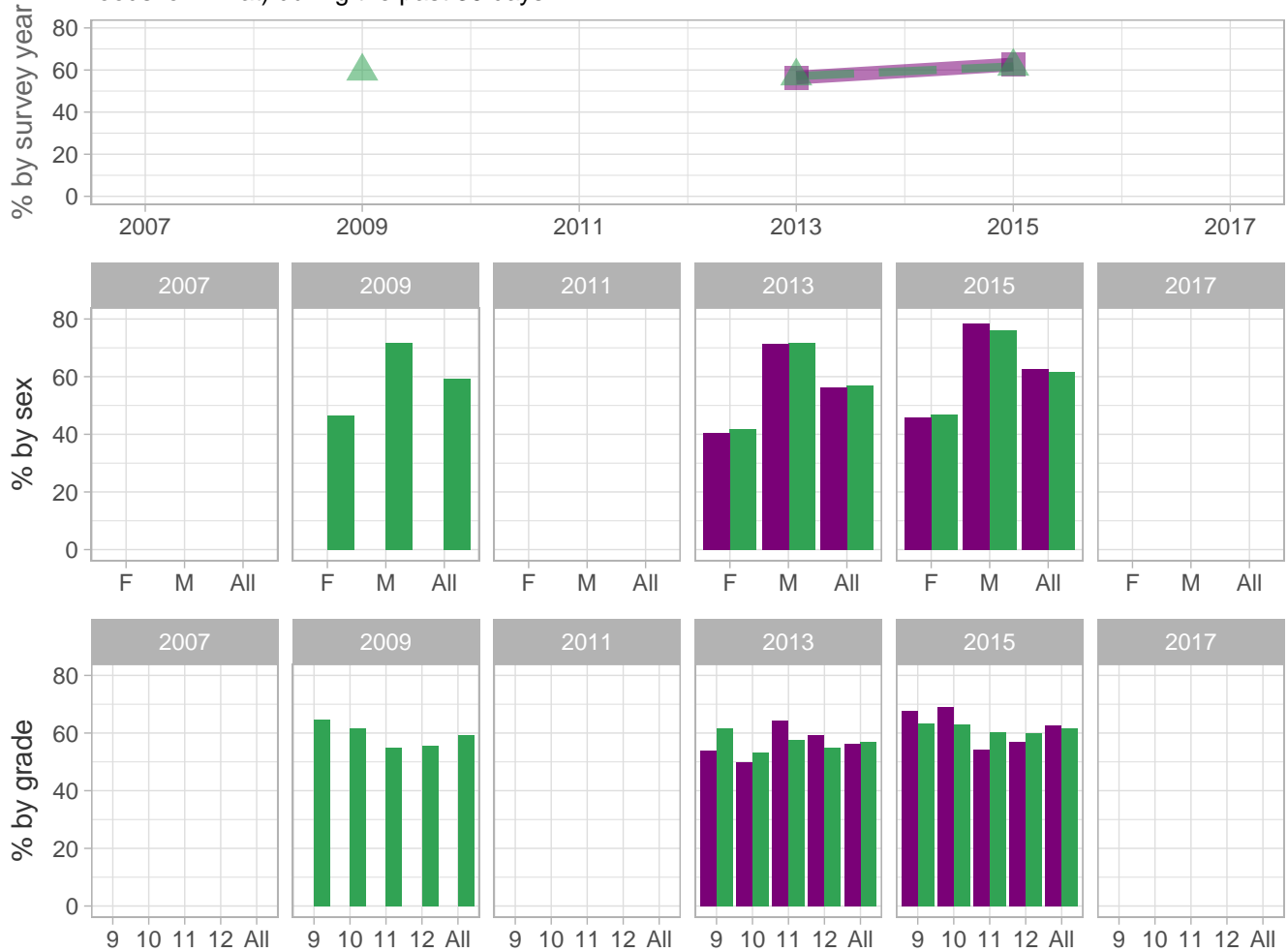
Percent (pct): numerator: bcd; denominator: abcd; qid: 107; 2007q999; 2009q61; 2011q999; 2013q65; 2015q60; 2017q999; Number (n): Estimated number of students projected based on school enrollment data.

-: Data not available; \*: Suppressed due to small cell sizes.

 School
  Region
  NH

### Physical Inactivity and Unhealthy Dietary Behaviors

Percent of students who did not eat less to lose weight (such as, ate less food, fewer calories, or foods low in fat) during the past 30 days



School-level by Sex and Grade

		2009(pct)	2011(pct)	2013(pct)	2015(pct)	2017(pct)	2017(n)
<b>By sex</b>	F	-	-	40.4	46.0	-	-
	M	-	-	71.3	78.4	-	-
<b>By grade</b>	9th	-	-	53.8	67.8	-	-
	10th	-	-	50.0	68.9	-	-
	11th	-	-	64.3	54.4	-	-
	12th	-	-	59.4	57.0	-	-
<b>All</b>	All	-	-	56.4	62.6	-	-

How the question was actually asked: During the past 30 days, did you eat less food, fewer calories, or foods low in fat to lose weight or to keep from gaining weight?; a: Yes; b: No;

Percent (pct): numerator: b; denominator: ab; qid: 109; 2007q999; 2009q63; 2011q999; 2013q67; 2015q61; 2017q999;

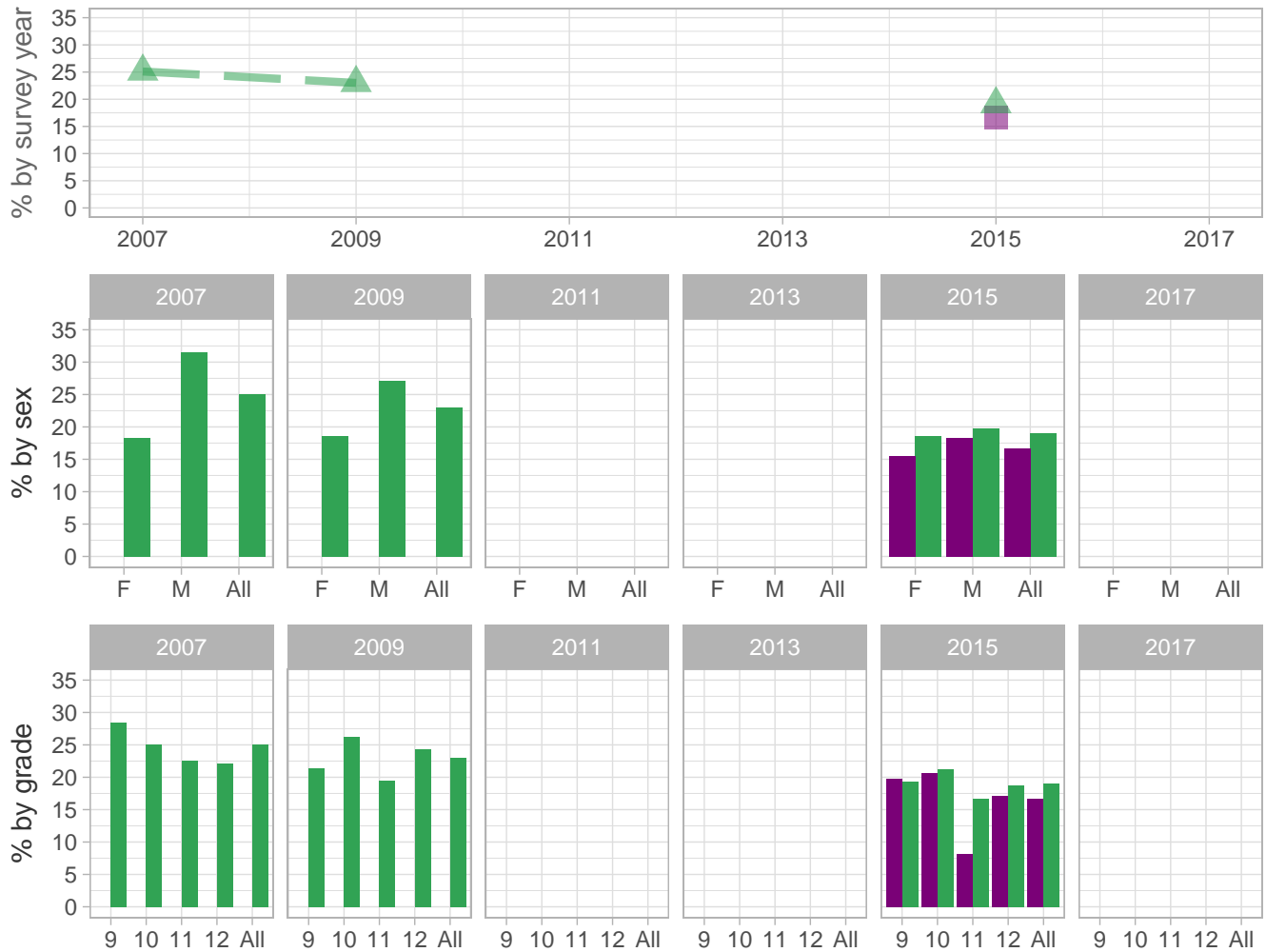
Number (n): Estimated number of students projected based on school enrollment data.

-: Data not available; \*: Suppressed due to small cell sizes.

 School
  Region
  NH

## Physical Inactivity and Unhealthy Dietary Behaviors

Percent of students who watched 3 or more hours per day of television on an average school day



School-level by Sex and Grade

		2009(pct)	2011(pct)	2013(pct)	2015(pct)	2017(pct)	2017(n)
<b>By sex</b>	F	-	-	-	15.5	-	-
	M	-	-	-	18.3	-	-
<b>By grade</b>	9th	-	-	-	19.8	-	-
	10th	-	-	-	20.6	-	-
	11th	-	-	-	8.2	-	-
	12th	-	-	-	17.1	-	-
<b>All</b>	All	-	-	-	16.7	-	-

How the question was actually asked: On an average school day, how many hours do you watch TV?; a: I do not watch TV on a average school day; b: Less than 1 hour per day; c: 1 hour per day; d: 2 hours per day; e: 3 hours per day; f: 4 hours per day; g: 5 or more hours per day;

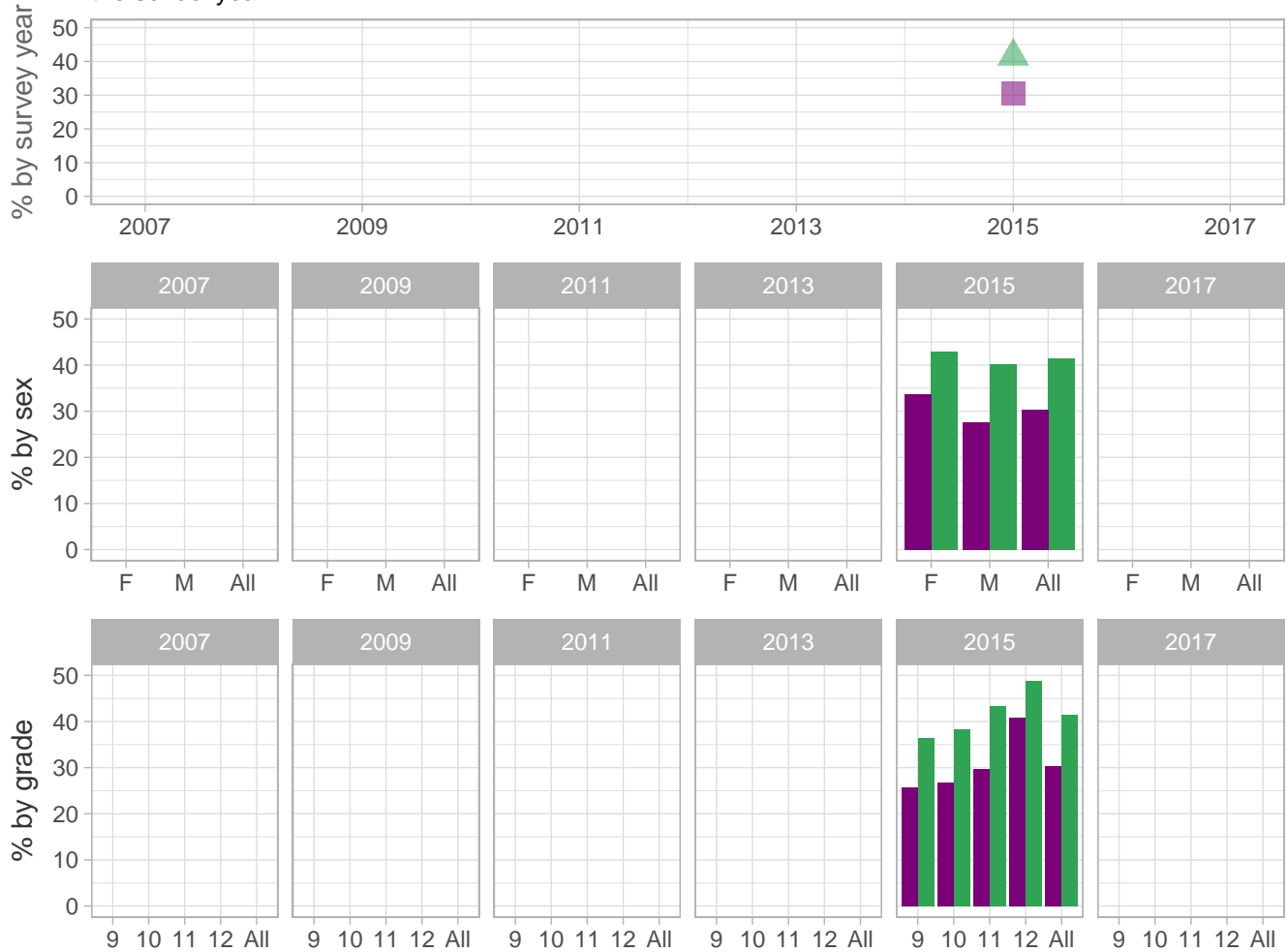
Percent (pct): numerator: efg; denominator: abcdefg; qid: 68; 2007q68; 2009q71; 2011q999; 2013q999; 2015q64; 2017q999; Number (n): Estimated number of students projected based on school enrollment data.

-: Data not available; \*: Suppressed due to small cell sizes.

 School
  Region
  NH

## Physical Inactivity and Unhealthy Dietary Behaviors

Percent of students who did not play on any of their school's sports teams for any season during the school year



School-level by Sex and Grade

		2009(pct)	2011(pct)	2013(pct)	2015(pct)	2017(pct)	2017(n)
<b>By sex</b>	F	-	-	-	33.7	-	-
	M	-	-	-	27.7	-	-
<b>By grade</b>	9th	-	-	-	25.8	-	-
	10th	-	-	-	26.8	-	-
	11th	-	-	-	29.8	-	-
	12th	-	-	-	40.9	-	-
<b>All</b>	<b>All</b>	-	-	-	30.4	-	-

How the question was actually asked: During this school year, in how many seasons (fall, winter, spring) will you play on any of your school's sports teams?; a: 0 seasons; b: 1 season; c: 2 seasons; d: 3 seasons;

Percent (pct): numerator: a; denominator: abcd; qid: 174; 2007q999; 2009q999; 2011q999; 2013q999; 2015q66; 2017q999;

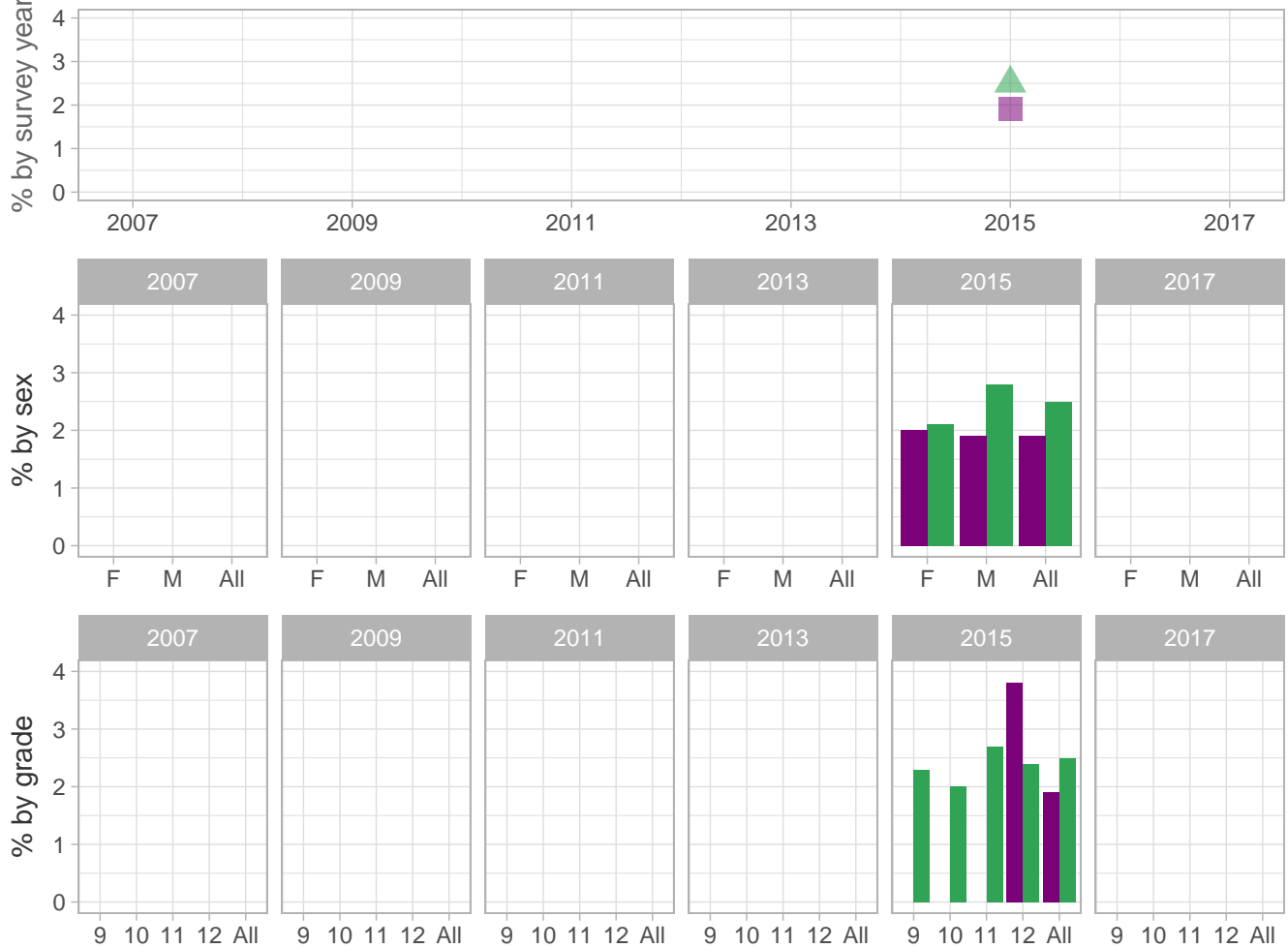
Number (n): Estimated number of students projected based on school enrollment data.

-: Data not available; \*: Suppressed due to small cell sizes.

 School
  Region
  NH

## Physical Inactivity and Unhealthy Dietary Behaviors

Percent of students who always or most of the time went hungry because there was not enough food in their home



School-level by Sex and Grade

		2009(pct)	2011(pct)	2013(pct)	2015(pct)	2017(pct)	2017(n)
By sex	F	-	-	-	2.0	-	-
	M	-	-	-	1.9	-	-
By grade	9th	-	-	-	*	-	-
	10th	-	-	-	*	-	-
	11th	-	-	-	*	-	-
	12th	-	-	-	3.8	-	-
All	All	-	-	-	1.9	-	-

How the question was actually asked: How often did you go hungry because there was not enough food in your home?; a: Never; b: Rarely; c: Sometimes; d: Most of the time; e: Always;

Percent (pct): numerator: de; denominator: abcde; qid: 178; 2007q999; 2009q999; 2011q999; 2013q999; 2015q75; 2017q999; Number (n): Estimated number of students projected based on school enrollment data.

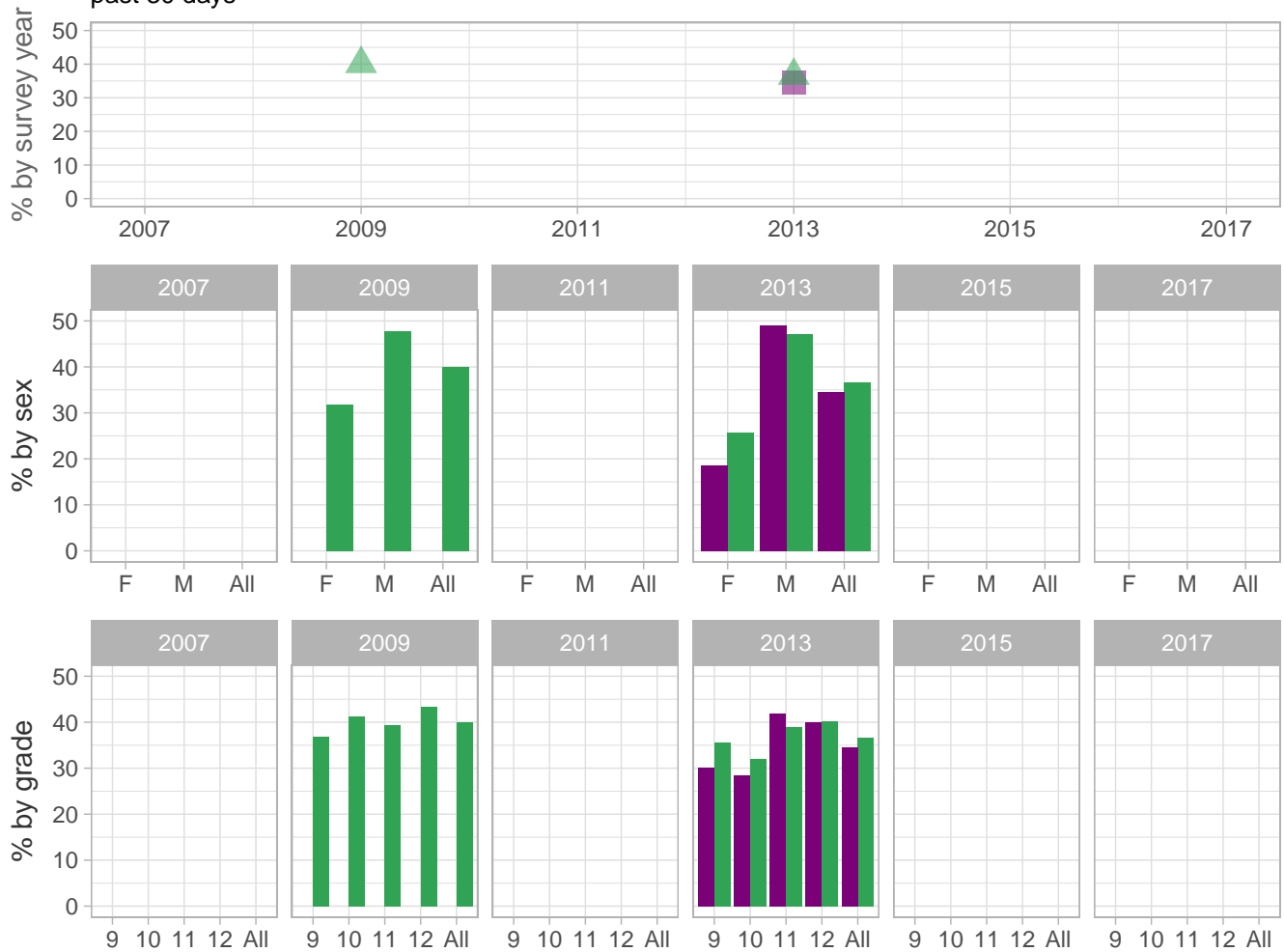
-: Data not available; \*: Suppressed due to small cell sizes.



 School  Region  NH

## Physical Inactivity and Unhealthy Dietary Behaviors

Percent of students who did not exercise to lose weight or to keep from gaining weight during the past 30 days



School-level by Sex and Grade

		2009(pct)	2011(pct)	2013(pct)	2015(pct)	2017(pct)	2017(n)
By sex	F	-	-	18.5	-	-	-
	M	-	-	49.1	-	-	-
By grade	9th	-	-	30.1	-	-	-
	10th	-	-	28.4	-	-	-
	11th	-	-	41.8	-	-	-
	12th	-	-	40.0	-	-	-
All	All	-	-	34.5	-	-	-

How the question was actually asked: During the past 30 days, did you exercise to lose weight or to keep from gaining weight?;  
a: Yes; b: No;

Percent (pct): numerator: b; denominator: ab; qid: 108; 2007q999; 2009q62; 2011q999; 2013q66; 2015q999; 2017q999;

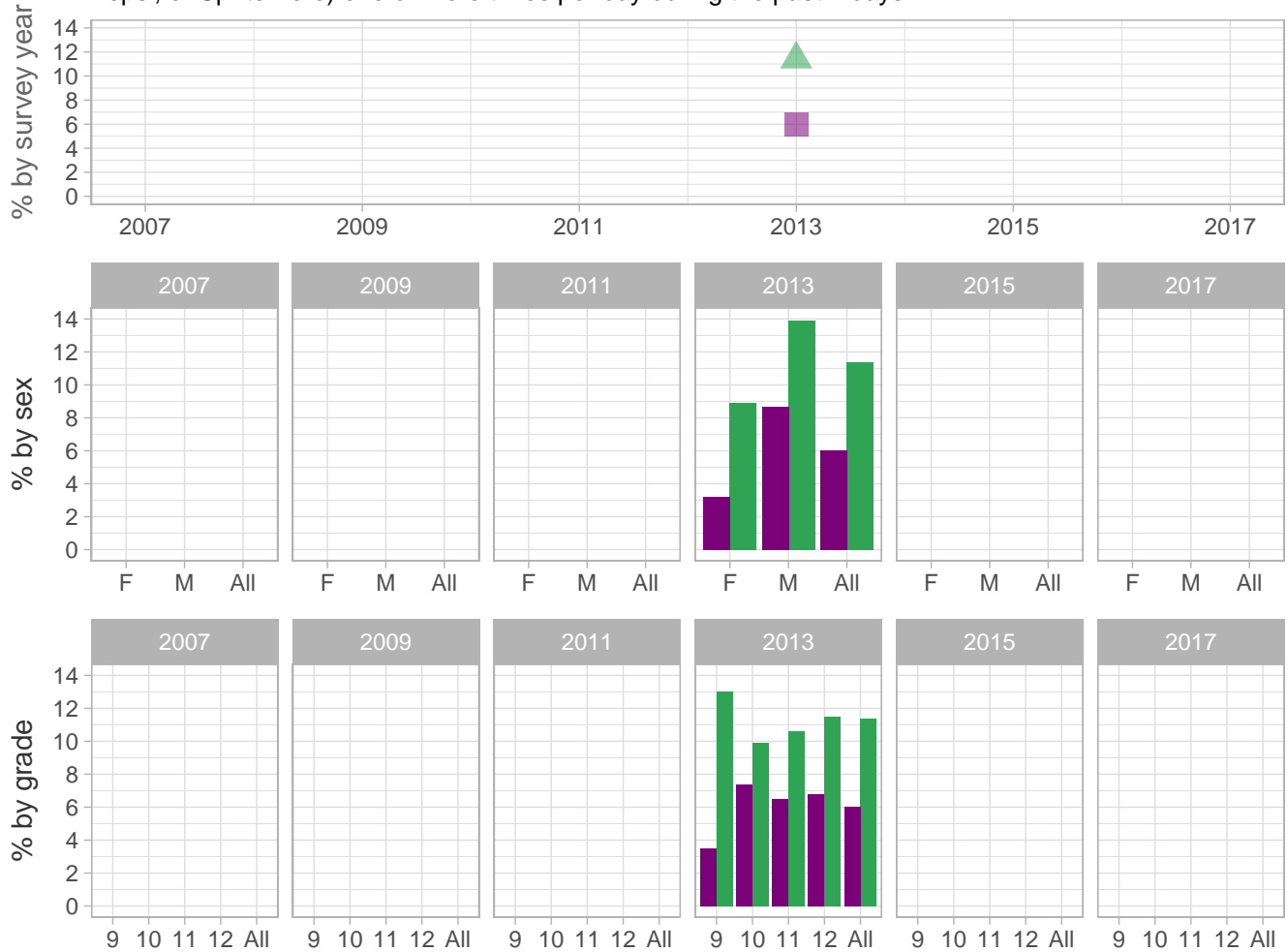
Number (n): Estimated number of students projected based on school enrollment data.

-: Data not available; \*: Suppressed due to small cell sizes.

 School 
  Region 
  NH

### Physical Inactivity and Unhealthy Dietary Behaviors

Percent of students who drank a can, bottle, or glass of diet soda or pop (such as Diet Coke, Diet Pepsi, or Sprite Zero) one or more times per day during the past 7 days



School-level by Sex and Grade

		2009(pct)	2011(pct)	2013(pct)	2015(pct)	2017(pct)	2017(n)
<b>By sex</b>	F	-	-	3.2	-	-	-
	M	-	-	8.7	-	-	-
<b>By grade</b>	9th	-	-	3.5	-	-	-
	10th	-	-	7.4	-	-	-
	11th	-	-	6.5	-	-	-
	12th	-	-	6.8	-	-	-
<b>All</b>	All	-	-	6.0	-	-	-

How the question was actually asked: During the past 7 days, how many times did you drink a can, bottle, or glass of diet soda or pop, such as Diet Coke, Diet Pepsi, or Sprite Zero?; a: I did not drink diet soda or pop during the past 7 days; b: 1 to 3 times during the past 7 days; c: 4 to 6 times during the past 7 days; d: 1 time per day; e: 2 times per day; f: 3 times per day; g: 4 or more times per day;

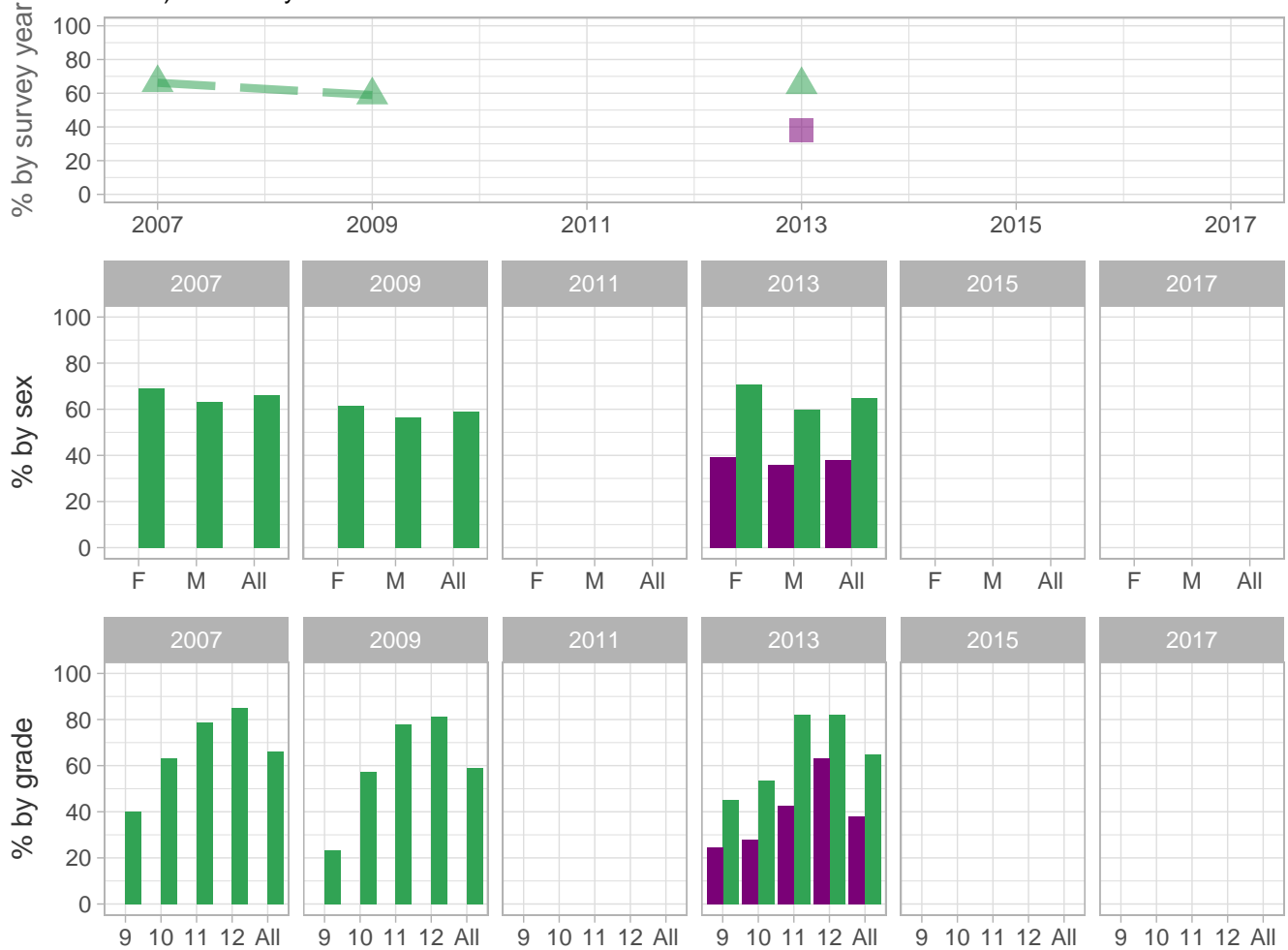
Percent (pct): numerator: defg; denominator: abcdefg; qid: 157; 2007q999; 2009q999; 2011q999; 2013q68; 2015q999; 2017q999; Number (n): Estimated number of students projected based on school enrollment data.

-: Data not available; \*: Suppressed due to small cell sizes.

 School
  Region
  NH

## Physical Inactivity and Unhealthy Dietary Behaviors

Percent of students who did not attend physical education classes on 1 or more days (in an average week) when they were in school



School-level by Sex and Grade

		2009(pct)	2011(pct)	2013(pct)	2015(pct)	2017(pct)	2017(n)
By sex	F	-	-	39.4	-	-	-
	M	-	-	35.8	-	-	-
By grade	9th	-	-	24.6	-	-	-
	10th	-	-	27.9	-	-	-
	11th	-	-	42.5	-	-	-
	12th	-	-	63.2	-	-	-
All	All	-	-	37.8	-	-	-

How the question was actually asked: In an average week when you are in school, on how many days do you go to physical education (PE) classes?; a: 0 days; b: 1 day; c: 2 days; d: 3 days; e: 4 days; f: 5 days;

Percent (pct): numerator: a; denominator: abcdef; qid: 70; 2007q70; 2009q73; 2011q999; 2013q70; 2015q999; 2017q999;

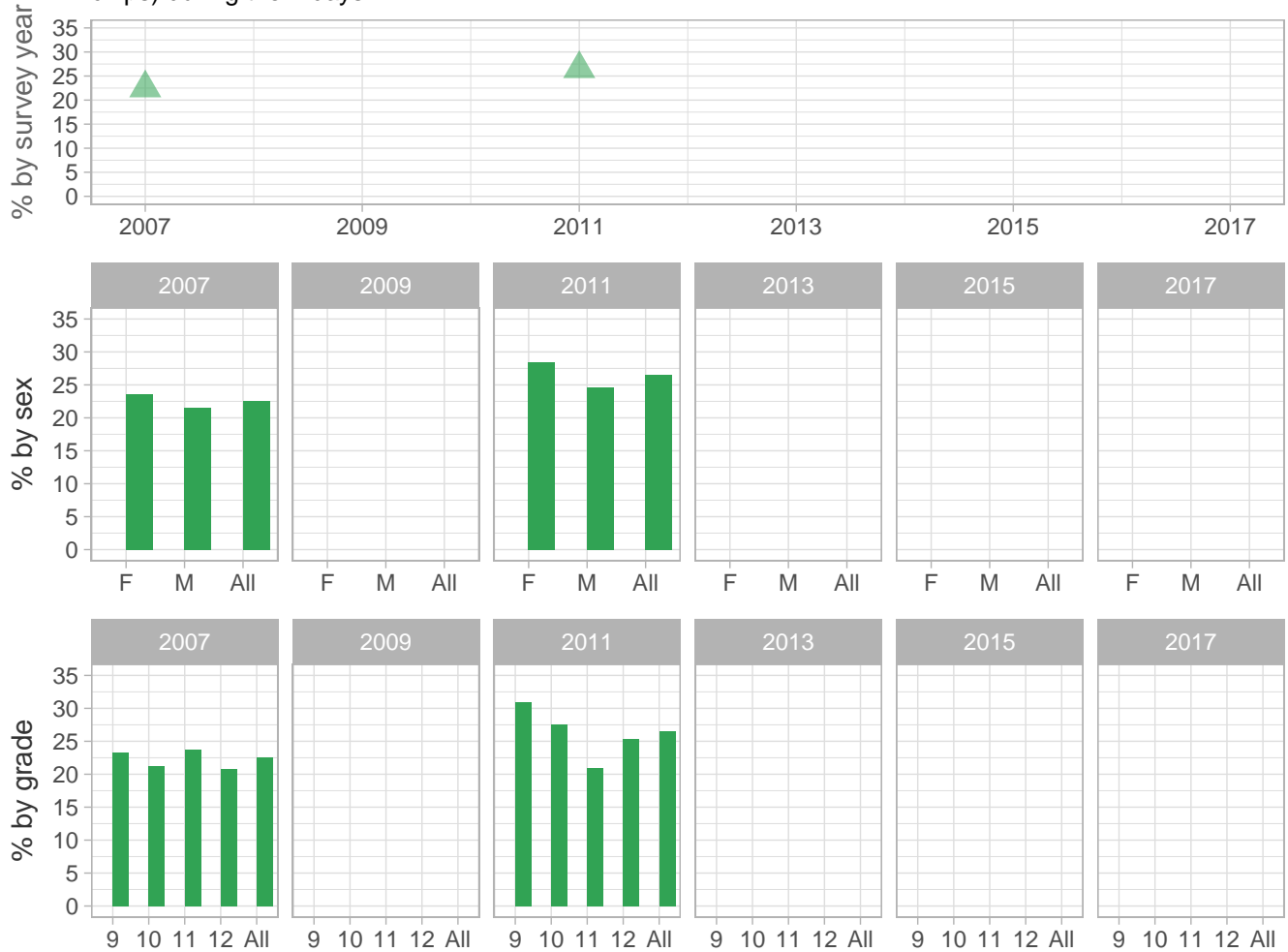
Number (n): Estimated number of students projected based on school enrollment data.

-: Data not available; \*: Suppressed due to small cell sizes.



## Physical Inactivity and Unhealthy Dietary Behaviors

Percent of students who did not eat potatoes (excluding French fries, fried potatoes, or potato chips) during the 7 days



School-level by Sex and Grade

		2009(pct)	2011(pct)	2013(pct)	2015(pct)	2017(pct)	2017(n)
<b>By sex</b>	F	-	*	-	-	-	-
	M	-	*	-	-	-	-
<b>By grade</b>	9th	-	*	-	-	-	-
	10th	-	*	-	-	-	-
	11th	-	-	-	-	-	-
	12th	-	-	-	-	-	-
<b>All</b>	All	-	*	-	-	-	-

How the question was actually asked: During the past 7 days, how many times did you eat potatoes?; a: I did not eat potatoes during the past 7 days; b: 1 to 3 times during the past 7 days; c: 4 to 6 times during the past 7 days; d: 1 time per day; e: 2 times per day; f: 3 times per day; g: 4 or more times per day;

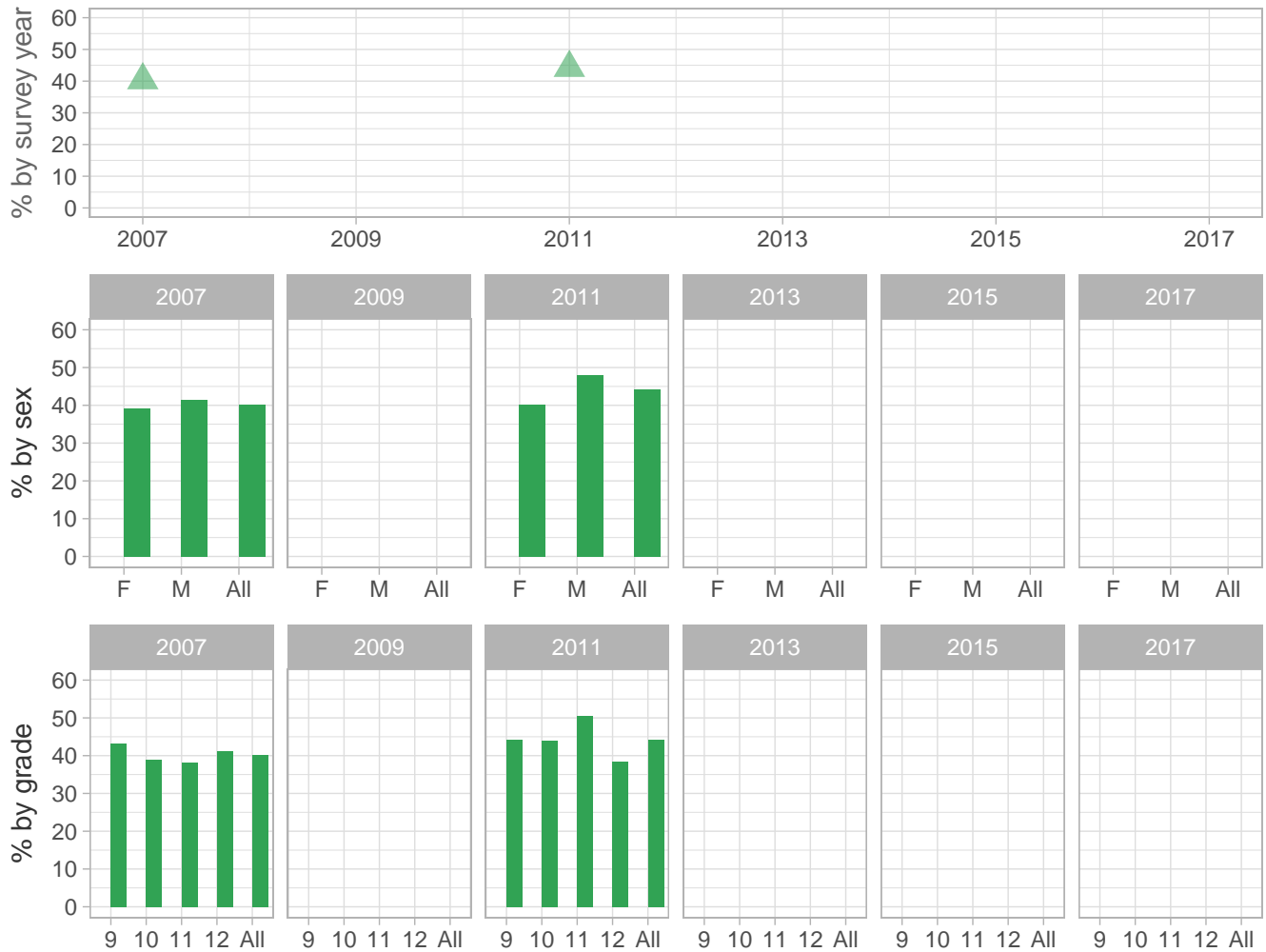
Percent (pct): numerator: a; denominator: abcdefg; qid: 62; 2007q62; 2009q999; 2011q66; 2013q999; 2015q999; 2017q999; Number (n): Estimated number of students projected based on school enrollment data.

-: Data not available; \*: Suppressed due to small cell sizes.

 School  Region  NH

## Physical Inactivity and Unhealthy Dietary Behaviors

Percent of students who did not eat carrots during the 7 days



School-level by Sex and Grade

		2009(pct)	2011(pct)	2013(pct)	2015(pct)	2017(pct)	2017(n)
By sex	F	-	*	-	-	-	-
	M	-	*	-	-	-	-
By grade	9th	-	*	-	-	-	-
	10th	-	*	-	-	-	-
	11th	-	-	-	-	-	-
	12th	-	-	-	-	-	-
All	All	-	*	-	-	-	-

How the question was actually asked: During the past 7 days, how many times did you eat carrots?; a: I did not eat carrots during the past 7 days; b: 1 to 3 times during the past 7 days; c: 4 to 6 times during the past 7 days; d: 1 time per day; e: 2 times per day; f: 3 times per day; g: 4 or more times per day;

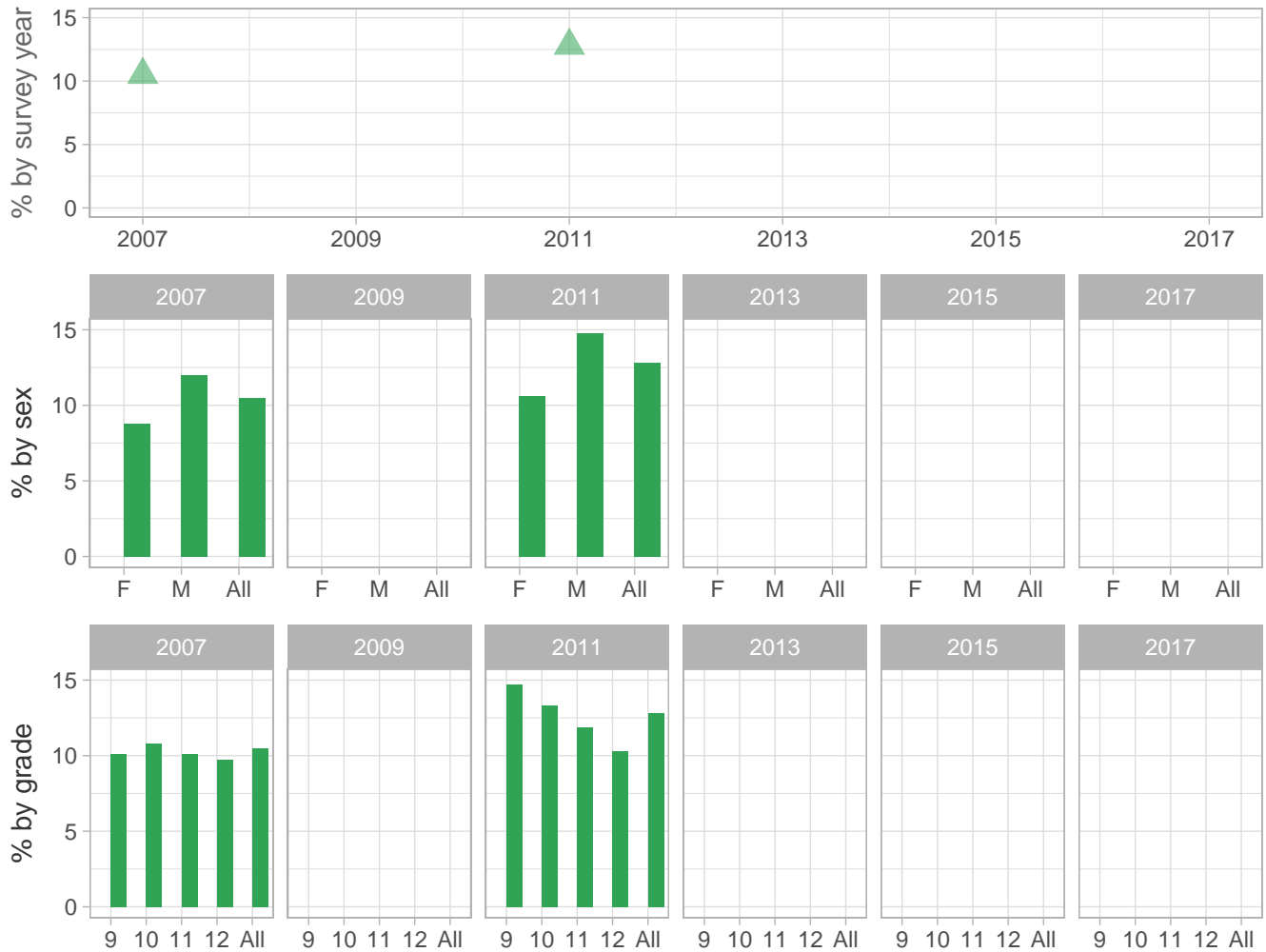
Percent (pct): numerator: a; denominator: abcdefg; qid: 63; 2007q63; 2009q999; 2011q67; 2013q999; 2015q999; 2017q999; Number (n): Estimated number of students projected based on school enrollment data.

-: Data not available; \*: Suppressed due to small cell sizes.

 School
  Region
  NH

## Physical Inactivity and Unhealthy Dietary Behaviors

Percent of students who did not eat other vegetables during the 7 days



School-level by Sex and Grade

		2009(pct)	2011(pct)	2013(pct)	2015(pct)	2017(pct)	2017(n)
<b>By sex</b>	F	-	*	-	-	-	-
	M	-	*	-	-	-	-
<b>By grade</b>	9th	-	*	-	-	-	-
	10th	-	*	-	-	-	-
	11th	-	-	-	-	-	-
	12th	-	-	-	-	-	-
	All	-	*	-	-	-	-

How the question was actually asked: During the past 7 days, how many times did you eat other vegetables?; a: I did not eat other vegetables during the past 7 days; b: 1 to 3 times during the past 7 days; c: 4 to 6 times during the past 7 days; d: 1 time per day; e: 2 times per day; f: 3 times per day; g: 4 or more times per day;

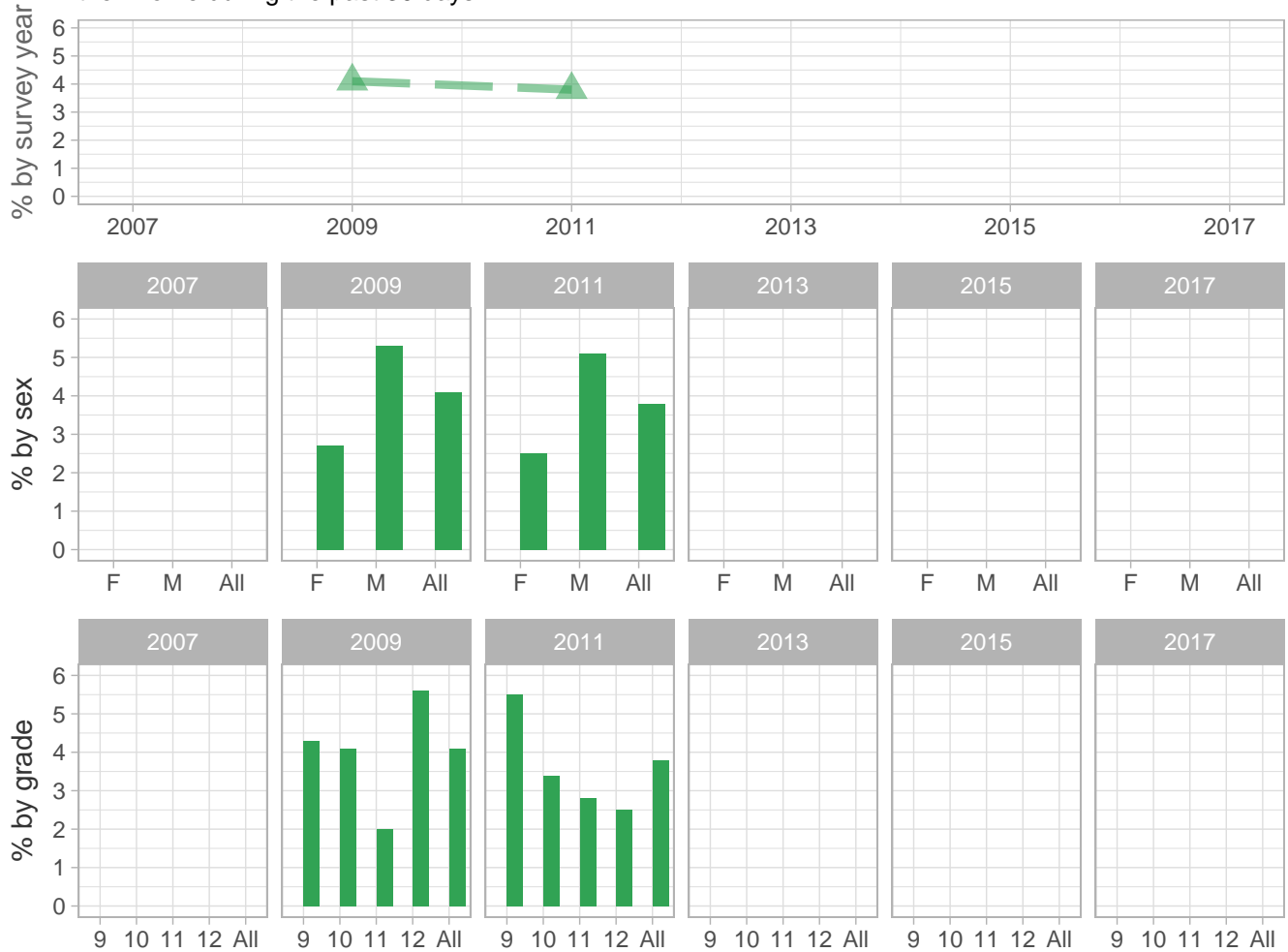
Percent (pct): numerator: a; denominator: abcdefg; qid: 64; 2007q64; 2009q999; 2011q68; 2013q999; 2015q999; 2017q999; Number (n): Estimated number of students projected based on school enrollment data.

-: Data not available; \*: Suppressed due to small cell sizes.

 School  Region  NH

## Physical Inactivity and Unhealthy Dietary Behaviors

Percent of students who always or most of the time went hungry because there was not enough food in their home during the past 30 days



School-level by Sex and Grade

		2009(pct)	2011(pct)	2013(pct)	2015(pct)	2017(pct)	2017(n)
By sex	F	-	*	-	-	-	-
	M	-	*	-	-	-	-
By grade	9th	-	*	-	-	-	-
	10th	-	*	-	-	-	-
	11th	-	-	-	-	-	-
	12th	-	-	-	-	-	-
All	All	-	*	-	-	-	-

How the question was actually asked: During the past 30 days, how often did you go hungry because there was not enough food in your home?; a: Never; b: Rarely; c: Sometimes; d: Most of the time; e: Always;

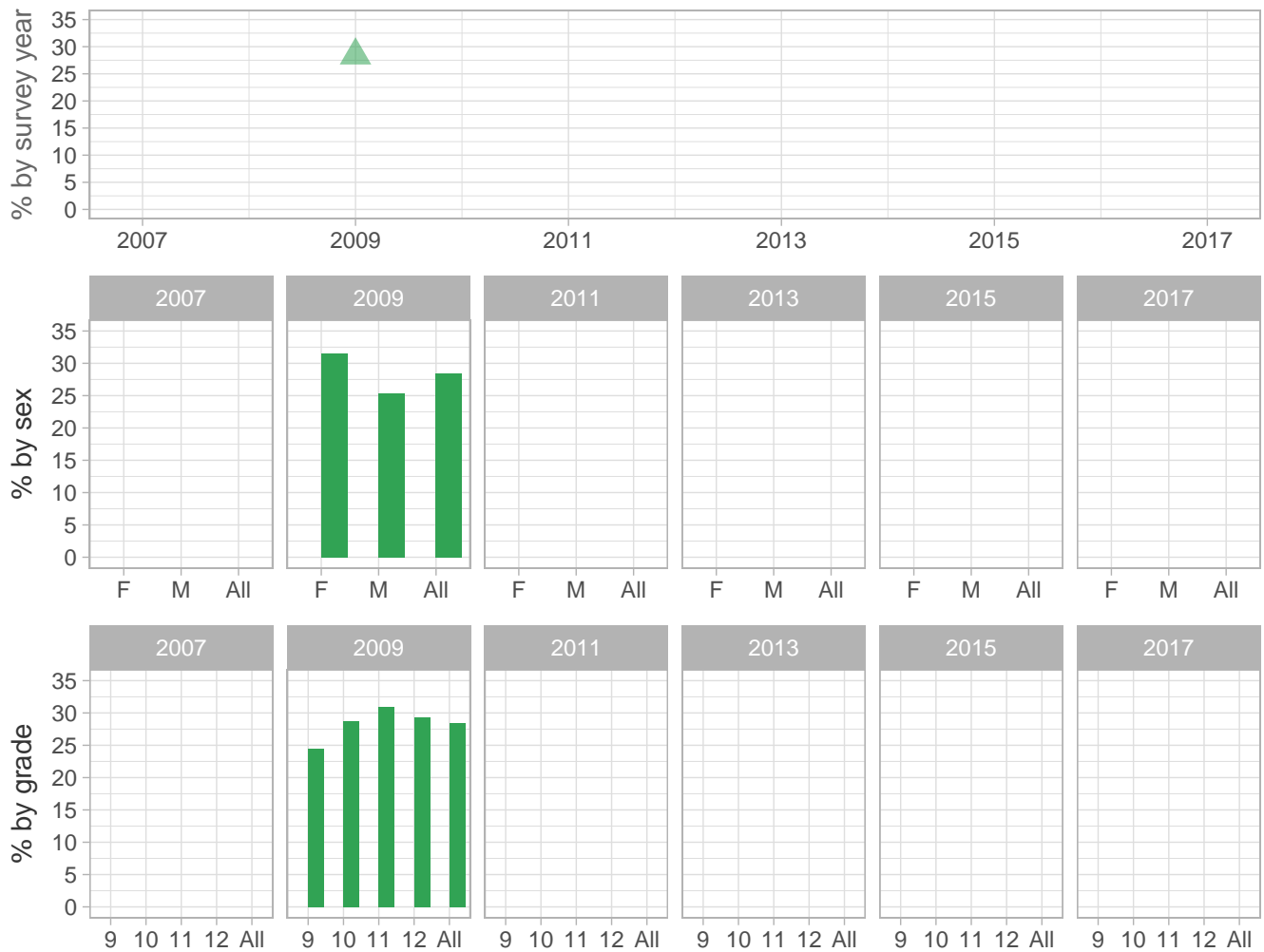
Percent (pct): numerator: de; denominator: abcde; qid: 113; 2007q999; 2009q67; 2011q70; 2013q999; 2015q999; 2017q999; Number (n): Estimated number of students projected based on school enrollment data.

-: Data not available; \*: Suppressed due to small cell sizes.

 School  Region  NH

## Physical Inactivity and Unhealthy Dietary Behaviors

Percent of students who described themselves as slightly or very overweight



School-level by Sex and Grade

		2009(pct)	2011(pct)	2013(pct)	2015(pct)	2017(pct)	2017(n)
By sex	F	-	-	-	-	-	-
	M	-	-	-	-	-	-
By grade	9th	-	-	-	-	-	-
	10th	-	-	-	-	-	-
	11th	-	-	-	-	-	-
	12th	-	-	-	-	-	-
All	All	-	-	-	-	-	-

How the question was actually asked: How do you describe your weight?; a: Very underweight; b: Slightly underweight; c: About the right weight; d: Slightly overweight; e: Very overweight;

Percent (pct): numerator: de; denominator: abcde; qid: 106; 2007q999; 2009q60; 2011q999; 2013q999; 2015q999; 2017q999; Number (n): Estimated number of students projected based on school enrollment data.

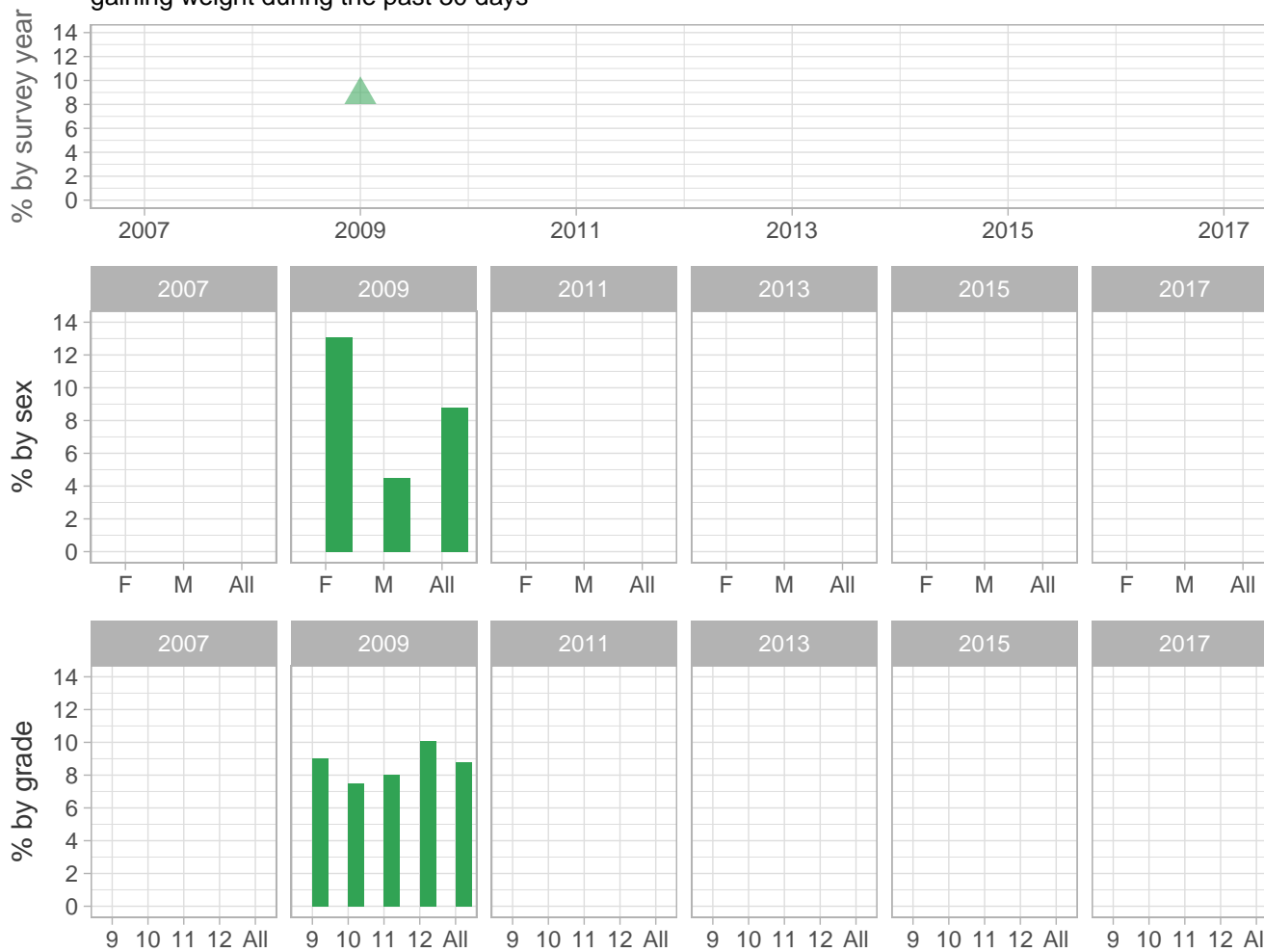
-: Data not available; \*: Suppressed due to small cell sizes.



 School  Region  NH

## Physical Inactivity and Unhealthy Dietary Behaviors

Percent of students who went without eating for 24 hours or more to lose weight or to keep from gaining weight during the past 30 days



School-level by Sex and Grade

		2009(pct)	2011(pct)	2013(pct)	2015(pct)	2017(pct)	2017(n)
By sex	F	-	-	-	-	-	-
	M	-	-	-	-	-	-
By grade	9th	-	-	-	-	-	-
	10th	-	-	-	-	-	-
	11th	-	-	-	-	-	-
	12th	-	-	-	-	-	-
All	All	-	-	-	-	-	-

How the question was actually asked: During the past 30 days, did you go without eating for 24 hours or more (also called fasting) to lose weight or to keep from gaining weight?; a: Yes; b: No;

Percent (pct): numerator: a; denominator: ab; qid: 110; 2007q999; 2009q64; 2011q999; 2013q999; 2015q999; 2017q999;

Number (n): Estimated number of students projected based on school enrollment data.

-: Data not available; \*: Suppressed due to small cell sizes.

 School
  Region
  NH

## Physical Inactivity and Unhealthy Dietary Behaviors

Percent of students who took any diet pills, powders, or liquids without a doctor's advice to lose weight or to keep from gaining weight during the past 30 days



School-level by Sex and Grade

		2009(pct)	2011(pct)	2013(pct)	2015(pct)	2017(pct)	2017(n)
<b>By sex</b>	F	-	-	-	-	-	-
	M	-	-	-	-	-	-
<b>By grade</b>	9th	-	-	-	-	-	-
	10th	-	-	-	-	-	-
	11th	-	-	-	-	-	-
	12th	-	-	-	-	-	-
<b>All</b>	<b>All</b>	-	-	-	-	-	-

How the question was actually asked: During the past 30 days, did you take any diet pills, powders, or liquids without a doctor's advice to lose weight or to keep from gaining weight?; a: Yes; b: No;

Percent (pct): numerator: a; denominator: ab; qid: 111; 2007q999; 2009q65; 2011q999; 2013q999; 2015q999; 2017q999;

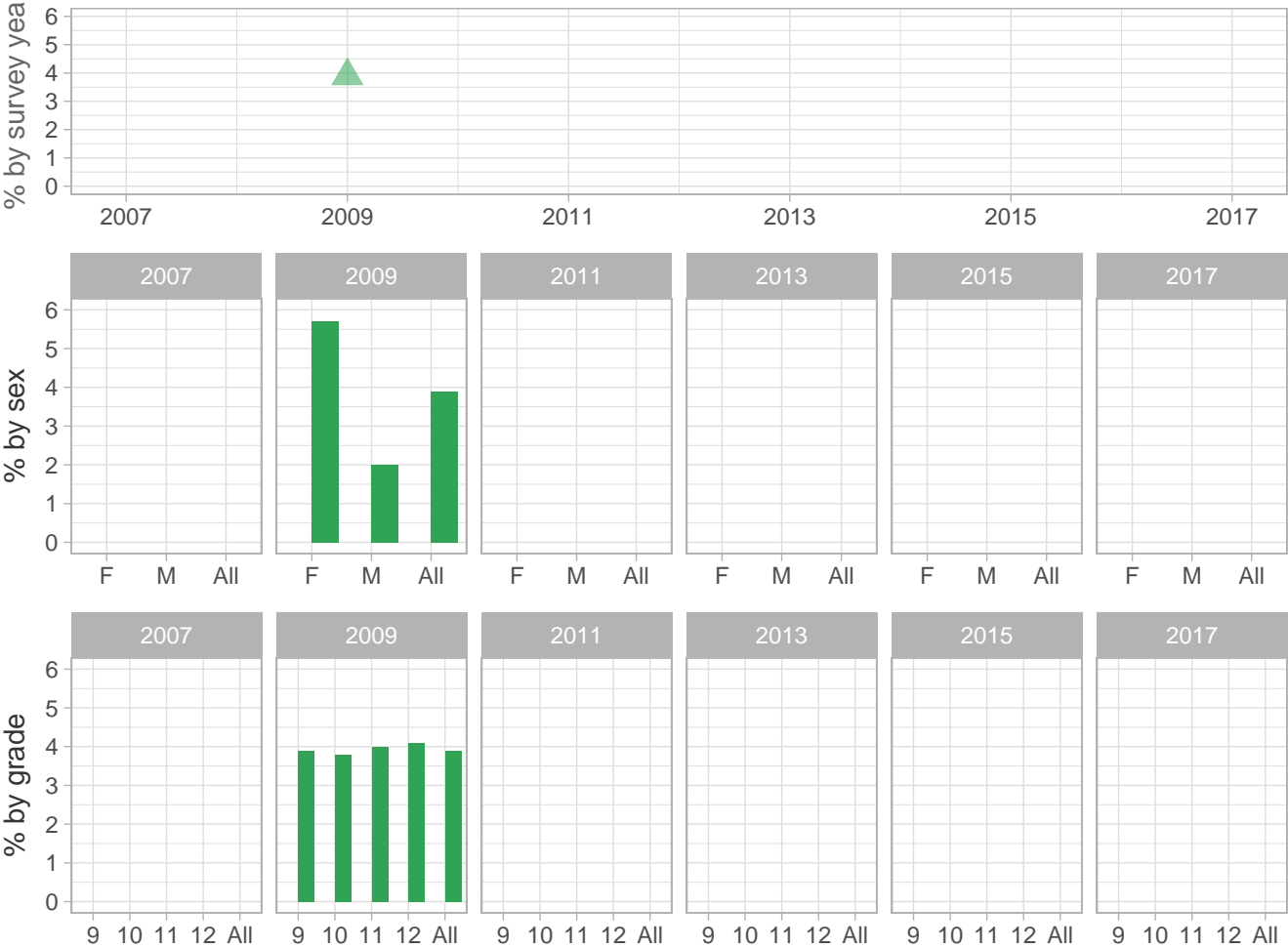
Number (n): Estimated number of students projected based on school enrollment data.

-: Data not available; \*: Suppressed due to small cell sizes.

 School  Region  NH

Physical Inactivity and Unhealthy Dietary Behaviors

Percent of students who vomited or took laxatives to lose weight or to keep from gaining weight during the past 30 days



School-level by Sex and Grade

		2009(pct)	2011(pct)	2013(pct)	2015(pct)	2017(pct)	2017(n)
By sex	F	-	-	-	-	-	-
	M	-	-	-	-	-	-
By grade	9th	-	-	-	-	-	-
	10th	-	-	-	-	-	-
	11th	-	-	-	-	-	-
	12th	-	-	-	-	-	-
All	All	-	-	-	-	-	-

How the question was actually asked: During the past 30 days, did you vomit or take laxatives to lose weight or to keep from gaining weight?; a: Yes; b: No;

Percent (pct): numerator: a; denominator: ab; qid: 112; 2007q999; 2009q66; 2011q999; 2013q999; 2015q999; 2017q999;

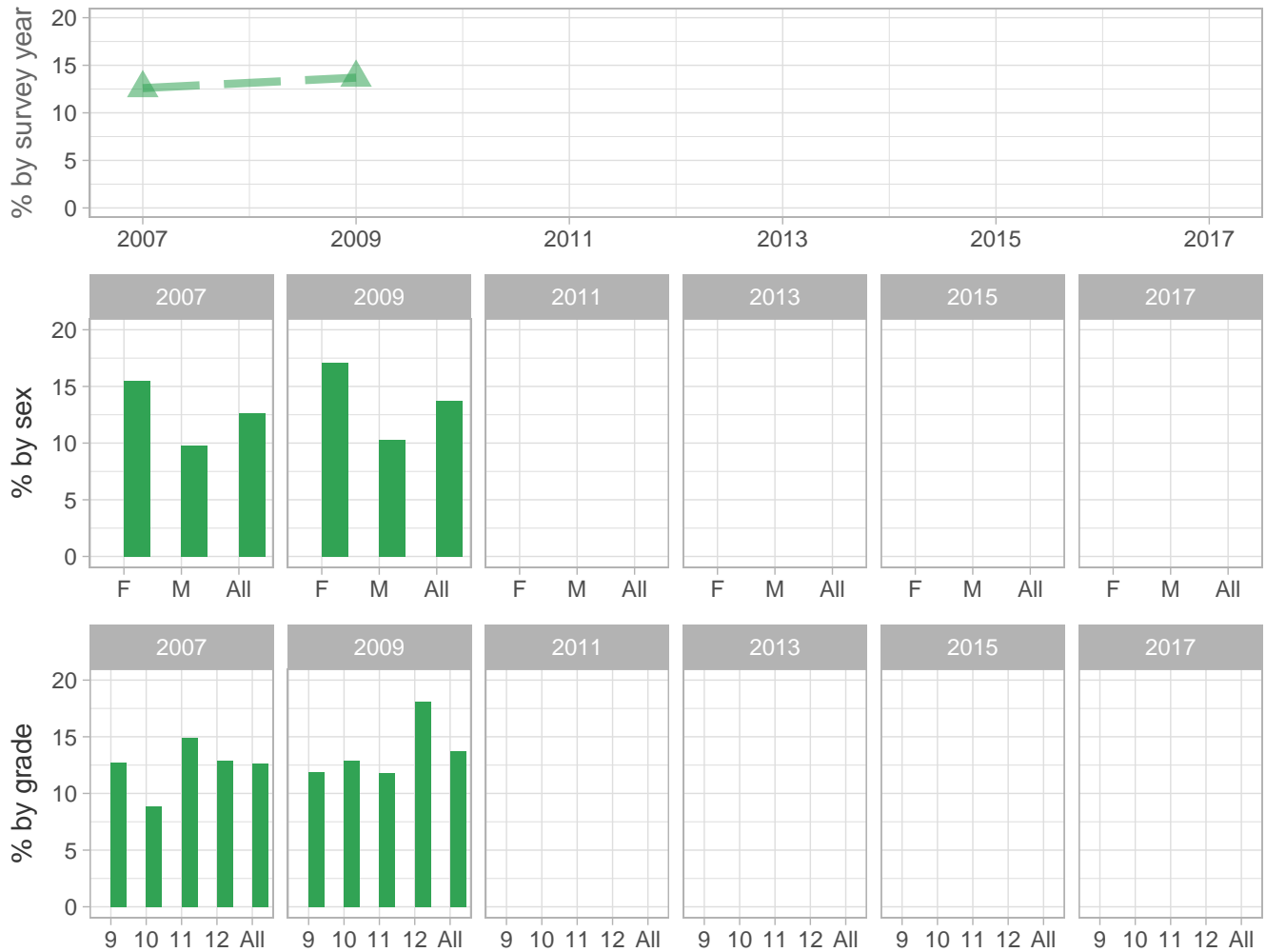
Number (n): Estimated number of students projected based on school enrollment data.

-: Data not available; \*: Suppressed due to small cell sizes.

 School  Region  NH

## Physical Inactivity and Unhealthy Dietary Behaviors

Percent of students who did not drink milk during the 7 days



School-level by Sex and Grade

		2009(pct)	2011(pct)	2013(pct)	2015(pct)	2017(pct)	2017(n)
By sex	F	-	-	-	-	-	-
	M	-	-	-	-	-	-
By grade	9th	-	-	-	-	-	-
	10th	-	-	-	-	-	-
	11th	-	-	-	-	-	-
	12th	-	-	-	-	-	-
All	All	-	-	-	-	-	-

How the question was actually asked: During the past 7 days, how many glasses of milk did you drink?; a: I did not drink milk during the past 7 days; b: 1 to 3 glasses during the past 7 days; c: 4 to 6 glasses during the past 7 days; d: 1 glass per day; e: 2 glasses per day; f: 3 glasses per day; g: 4 or more glasses per day;

Percent (pct): numerator: a; denominator: abcdefg; qid: 66; 2007q66; 2009q68; 2011q999; 2013q999; 2015q999; 2017q999; Number (n): Estimated number of students projected based on school enrollment data.

-: Data not available; \*: Suppressed due to small cell sizes.